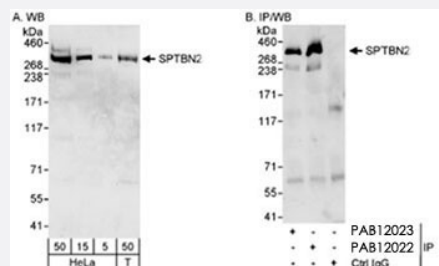


# SPTBN2 polyclonal antibody

Catalog # PAB12022      Size 100 uL

## Applications



## Western Blot

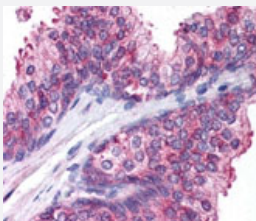
Western blot analysis of SPTBN2 in HeLa whole cell lysate (5, 15 and 50 ug for WB; 1 mg for IP, 20% of IP loaded) and HEK 293T (Bosc 23) (T : 50 ug) cells with SPTBN2 polyclonal antibody (Cat # PAB12022).

Antibodies : SPTBN2 polyclonal antibody (Cat # PAB12022) used for WB at 0.04 ug/mL (A) and 1 ug/mL (B) and used for IP at 3 ug/mg lysate.

SPTBN2 was also immunoprecipitated by SPTBN2 polyclonal antibody (Cat # PAB12023), which recognizes an upstream epitope.

Detection : Chemiluminescence with exposure times of 10 seconds (A) and 30 seconds (B).

## Immunohistochemistry



Immunohistochemical staining of SPTBN2 in human prostate epithelium with SPTBN2 polyclonal antibody (Cat # PAB12022).

## Specification

**Product Description** Rabbit polyclonal antibody raised against partial recombinant SPTBN2.

**Immunogen** Recombinant protein corresponding to C-terminus of human SPTBN2.

**Host** Rabbit

**Reactivity** Human

<b>Specificity</b>	The epitope recognized by this antibody maps to a C-terminal region between residue 2300 and 2390 of human spectrin, beta, non-erythrocytic 2 (spinocerebellar ataxia 5 ) using the numbering given in entry NP_008877.1
<b>Form</b>	Liquid
<b>Quality Control Testing</b>	Antibody Reactive Against Recombinant Protein.
<b>Recommend Usage</b>	Immunohistochemistry (10-20 ug/mL) Western Blot (1:2000-1:10000) The optimal working dilution should be determined by the end user.
<b>Storage Buffer</b>	In Tris-citrate/phosphate buffer, pH 7.0-8.0 (0.09% sodium azide)
<b>Storage Instruction</b>	Store at 4°C. Do not freeze.
<b>Note</b>	This product contains sodium azide: a POISONOUS AND HAZARDOUS SUBSTANCE which should be handled by trained staff only.

## Applications

- Western Blot

Western blot analysis of SPTBN2 in HeLa whole cell lysate (5, 15 and 50 ug for WB; 1 mg for IP, 20% of IP loaded) and HEK 293T (Bosc 23) (T : 50 ug) cells with SPTBN2 polyclonal antibody (Cat # PAB12022).

Antibodies : SPTBN2 polyclonal antibody (Cat # PAB12022) used for WB at 0.04 ug/mL (A) and 1 ug/mL (B) and used for IP at 3 ug/mg lysate.

SPTBN2 was also immunoprecipitated by SPTBN2 polyclonal antibody (Cat # PAB12023), which recognizes an upstream epitope.

Detection : Chemiluminescence with exposure times of 10 seconds (A) and 30 seconds (B).

- Immunohistochemistry (Formalin/PFA-fixed paraffin-embedded sections)

- Immunohistochemistry

Immunohistochemical staining of SPTBN2 in human prostate epithelium with SPTBN2 polyclonal antibody (Cat # PAB12022).

- Immunoprecipitation

## Gene Info — SPTBN2

<b>Entrez GeneID</b>	<a href="#">6712</a>
<b>Protein Accession#</b>	<a href="#">NP_008877.1</a>
<b>Gene Name</b>	SPTBN2

Gene Alias	GTRAP41, SCA5
Gene Description	spectrin, beta, non-erythrocytic 2
Omim ID	<a href="#">600224</a> <a href="#">604985</a>
Gene Ontology	<a href="#">Hyperlink</a>
Gene Summary	beta
Other Designations	beta-III spectrin spinocerebellar ataxia 5

## Disease

- [Spinocerebellar ataxia](#)
- [Spinocerebellar Ataxias](#)