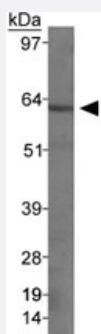


# Sstr1 polyclonal antibody

Catalog # PAB12019      Size 100 uL

## Applications



### Western Blot (Tissue lysate)

Western blot analysis of Sstr1 in rat pancreas with Sstr1 polyclonal antibody (Cat # PAB12019).

## Specification

<b>Product Description</b>	Rabbit polyclonal antibody raised against synthetic peptide of Sstr1.
<b>Immunogen</b>	A synthetic peptide corresponding to C-terminus of rat Sstr1.
<b>Host</b>	Rabbit
<b>Reactivity</b>	Human, Mouse, Rat
<b>Form</b>	Liquid
<b>Quality Control Testing</b>	Antibody Reactive Against Synthetic Peptide.
<b>Recommend Usage</b>	Western Blot (1:1000-1:5000) The optimal working dilution should be determined by the end user.
<b>Storage Buffer</b>	In antiserum (0.05% sodium azide)
<b>Storage Instruction</b>	Store at -20°C or -80°C. Aliquot to avoid repeated freezing and thawing.
<b>Note</b>	This product contains sodium azide: a POISONOUS AND HAZARDOUS SUBSTANCE which should be handled by trained staff only.

## Applications

- Western Blot (Tissue lysate)

Western blot analysis of Sstr1 in rat pancreas with Sstr1 polyclonal antibody (Cat # PAB12019).

- Immunocytochemistry

- Immunoprecipitation

## Gene Info — Sstr1

Entrez GeneID	<a href="#">25033</a>
---------------	-----------------------

Gene Name	Sstr1
-----------	-------

Gene Alias	Gpcrna
------------	--------

Gene Description	somatostatin receptor 1
------------------	-------------------------

Gene Ontology	<a href="#">Hyperlink</a>
---------------	---------------------------

Other Designations	RNGPCRRNA Somatostatin receptor subtype 1
--------------------	-------------------------------------------