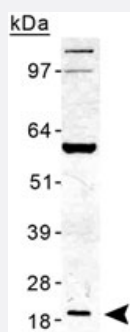


TMED10 polyclonal antibody

Catalog # PAB11997 Size 100 uL

Applications



Western Blot (Tissue lysate)

Western blot analysis of TMED10 in human liver lysate with TMED10 polyclonal antibody (Cat # PAB11997).

Specification

Product Description	Rabbit polyclonal antibody raised against synthetic peptide of TMED10.
Immunogen	A synthetic peptide corresponding to amino acids 100-200 of human TMED10.
Host	Rabbit
Reactivity	Bovine, Chicken, Human, Mouse, Primates, Rabbit, Rat
Form	Liquid
Recommend Usage	Western Blot (2 ug/mL) The optimal working dilution should be determined by the end user.
Storage Buffer	In PBS (30% glycerol, 0.09% sodium azide)
Storage Instruction	Store at -20°C or -80°C. Aliquot to avoid repeated freezing and thawing.
Note	This product contains sodium azide: a POISONOUS AND HAZARDOUS SUBSTANCE which should be handled by trained staff only.

Applications

- Western Blot (Tissue lysate)

Western blot analysis of TMED10 in human liver lysate with TMED10 polyclonal antibody (Cat # PAB11997).

Gene Info — TMED10

Entrez GeneID [10972](#)

Protein Accession# [P49755](#)

Gene Name TMED10

Gene Alias P24(DELTA), S31I125, S31III125, TMP21, Tmp-21-I

Gene Description transmembrane emp24-like trafficking protein 10 (yeast)

Omim ID [605406](#)

Gene Ontology [Hyperlink](#)

Gene Summary This gene is a member of the EMP24/GP25L/p24 family and encodes a protein with a GOLD domain. This type I membrane protein is localized to the plasma membrane and golgi cisternae and is involved in vesicular protein trafficking. The protein is also a member of a heteromeric secretase complex and regulates the complex's gamma-secretase activity without affecting its epsilon-secretase activity. Mutations in this gene have been associated with early-onset familial Alzheimer's disease. This gene has a pseudogene on chromosome 8. [provided by RefSeq]

Other Designations 21 kDa transmembrane trafficking protein|transmembrane emp24 domain-containing protein 10

Disease

- [Diabetes Mellitus](#)