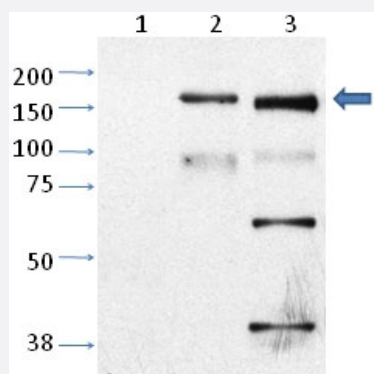


# Trpm2 polyclonal antibody

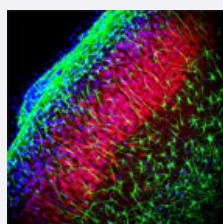
Catalog # PAB11990      Size 100 uL

## Applications



### Western Blot

Western blot analysis of Trpm2 in CHO cells untransfected (Lane 1), CHO cell transfected with rat TRPM2 (Lane 2) and mouse cortical neurons (cultured) (Lane 3) with Trpm2 polyclonal antibody (Cat # PAB11990). Photo courtesy of Dr. Paco Herson, Oregon Health & Science University.



### Immunohistochemistry

Immunohistochemical staining of Trpm2 on rat hippocampus with Trpm2 polyclonal antibody (Cat # PAB11990). TRPM2 is stained red, GFAP is stained green and nuclei staining is blue. Photo courtesy of Dr. Ji-Zhong Bai, The University of Auckland, New Zealand.

## Specification

<b>Product Description</b>	Rabbit polyclonal antibody raised against synthetic peptide of Trpm2.
<b>Immunogen</b>	A synthetic peptide corresponding to amino acids 1430-1508 of rat Trpm2.
<b>Host</b>	Rabbit
<b>Reactivity</b>	Mouse, Rat
<b>Specificity</b>	This antibody is specific to isoform 1, or the long isoform (TRPM2-L), of TRPM2.
<b>Form</b>	Liquid

<b>Recommend Usage</b>	Immunohistochemistry (1:200) Western Blot (1:500-1:1000) The optimal working dilution should be determined by the end user.
<b>Storage Buffer</b>	In PBS (30% glycerol, 0.09% sodium azide)
<b>Storage Instruction</b>	Store at 4°C for short term. For long term storage store at -20°C. Aliquot to avoid repeated freezing and thawing.
<b>Note</b>	This product contains sodium azide: a POISONOUS AND HAZARDOUS SUBSTANCE which should be handled by trained staff only.

## Applications

- Western Blot

Western blot analysis of Trpm2 in CHO cells untransfected (Lane 1), CHO cell transfected with rat TRPM2 (Lane 2) and mouse cortical neurons (cultured) (Lane 3) with Trpm2 polyclonal antibody (Cat # PAB11990). Photo courtesy of Dr. Paco Herson, Oregon Health & Science University.

- Immunohistochemistry

Immunohistochemical staining of Trpm2 on rat hippocampus with Trpm2 polyclonal antibody (Cat # PAB11990). TRPM2 is stained red, GFAP is stained green and nuclei staining is blue. Photo courtesy of Dr. Ji-Zhong Bai, The University of Auckland, New Zealand.

## Gene Info — Trpm2

<b>Entrez GeneID</b>	<a href="#">294329</a>
<b>Protein Accession#</b>	<a href="#">Q5G856</a>
<b>Gene Name</b>	Trpm2
<b>Gene Alias</b>	Trpm2-predicted
<b>Gene Description</b>	transient receptor potential cation channel, subfamily M, member 2
<b>Gene Ontology</b>	<a href="#">Hyperlink</a>
<b>Gene Summary</b>	subfamily M
<b>Other Designations</b>	null transient receptor potential melastatin family 2

## Publication Reference

- [TRPM2 is an ion channel that modulates hematopoietic cell death through activation of caspases and PARP cleavage.](#)

Zhang W, Hirschler-Laszkiewicz I, Tong Q, Conrad K, Sun SC, Penn L, Barber DL, Stahl R, Carey DJ, Cheung JY, Miller BA.  
American Journal of Physiology. Cell Physiology 2006 Apr; 290(4):C1146.

Application: IF, WB-Tr, Human, U937-ecoR cells

- [A novel TRPM2 isoform inhibits calcium influx and susceptibility to cell death.](#)

Zhang W, Chu X, Tong Q, Cheung JY, Conrad K, Masker K, Miller BA.  
The Journal of Biological Chemistry 2003 May; 278(18):16222.

Application: IF, IP, WB-Tr, Human, HEK 293T, TF-1 cells