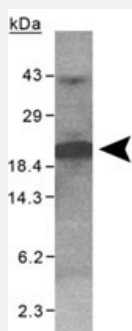


# XAGE1 polyclonal antibody

Catalog # PAB11978      Size 100 uL

## Applications



### Western Blot (Recombinant protein)

Western blot analysis of XAGE1 on purified His-XAGE1 (100 ug) with XAGE1 polyclonal antibody (Cat # PAB11978).

## Specification

**Product Description** Rabbit polyclonal antibody raised against synthetic peptide of human XAGE1.

**Immunogen** A synthetic peptide corresponding to an internal sequence within human XAGE1.

**Host** Rabbit

**Theoretical MW (kDa)** 20

**Reactivity** Human

**Form** Liquid

**Purity** Unpurified.

**Recommend Usage**  
Immunoprecipitation (1:10-1:500)  
Western Blot (1:500)  
The optimal working dilution should be determined by the end user.

**Storage Buffer** In whole antisera (0.09% sodium azide).

**Storage Instruction**  
Store at -20°C or -80°C.  
Aliquot to avoid repeated freezing and thawing.

**Note**

This product contains sodium azide: a POISONOUS AND HAZARDOUS SUBSTANCE which should be handled by trained staff only.

## Applications

- Western Blot (Recombinant protein)

Western blot analysis of XAGE1 on purified His-XAGE1 (100 ug) with XAGE1 polyclonal antibody (Cat # PAB11978).

- Immunoprecipitation

## Gene Info — XAGE1D

Entrez GeneID [9503](#)

Protein Accession# [Q9HD64](#)

Gene Name XAGE1D

Gene Alias -

Gene Description X antigen family, member 1D

Omim ID [300289](#)

Gene Ontology [Hyperlink](#)

**Gene Summary** This gene is a member of the XAGE subfamily, which belongs to the GAGE family. The GAGE genes are expressed in a variety of tumors and in some fetal and reproductive tissues. This gene is strongly expressed in Ewing's sarcoma, alveolar rhabdomyosarcoma and normal testis. The protein encoded by this gene contains a nuclear localization signal and shares a sequence similarity with other GAGE/PAGE proteins. Because of the expression pattern and the sequence similarity, this protein also belongs to a family of CT (cancer-testis) antigens. Alternative splicing of this gene, in addition to the use of an alternative transcription start site and an alternative translation initiation codon, results in multiple variants that encode different isoforms. [provided by RefSeq]

**Other Designations** G antigen, family D, 2|OTTHUMP00000042367

## Gene Info — XAGE1E

Entrez GeneID [653067](#)

Protein Accession# [Q9HD64](#)

Gene Name	XAGE1E
Gene Alias	-
Gene Description	X antigen family, member 1E
Gene Ontology	<a href="#">Hyperlink</a>
Gene Summary	XAGE1E is 1 of 5 copies of the XAGE1 gene (see XAGE1D; MIM 300289) (Chen et al., 2006 [PubMed 16382448]).[supplied by OMIM]
Other Designations	X antigen family member 1E xage-1 p16

## Publication Reference

- [Characterization of overlapping XAGE-1 transcripts encoding a cancer testis antigen expressed in lung, breast, and other types of cancers.](#)  
Egland KA, Kumar V, Duray P, Pastan I.  
Molecular Cancer Therapeutics 2002 May; 1(7):441.  
  
Application: WB-Tr, Human, HEK 293T cells
- [XAGE-1, a new gene that is frequently expressed in Ewing's sarcoma.](#)  
Liu XF, Helman LJ, Yeung C, Bera TK, Lee B, Pastan I.  
Cancer Research 2000 Sep; 60(17):4752.
- [Novel genes in the PAGE and GAGE family of tumor antigens found by homology walking in the dbEST database.](#)  
Brinkmann U, Vasmatazis G, Lee B, Pastan I.  
Cancer Research 1999 Apr; 59(7):1445.