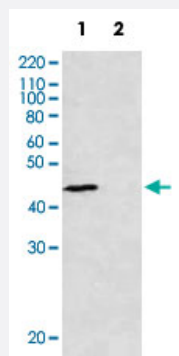


rad51 polyclonal antibody

Catalog # PAB1172 Size 100 uL

Applications



Immunoprecipitation

Immunoprecipitation of rad51 in yeast whole cell extracts.

M : Molecular weight markers (kD).

Lane 1, Wild-type strain.

Lane 2, rad51 deletion strain.

Specification

Product Description	Rabbit polyclonal antibody raised against full length recombinant <i>Schizosaccharomyces pombe</i> rad 51.
Immunogen	Recombinant protein corresponding to full length <i>Schizosaccharomyces pombe</i> rad51.
Host	Rabbit
Form	Liquid
Recommend Usage	Western Blot (1:2000-1:5000) The optimal working dilution should be determined by the end user.
Storage Buffer	In buffer containing 0.09% sodium azide
Storage Instruction	Store at 4°C. For long term storage store at -20°C. Aliquot to avoid repeated freezing and thawing.
Note	This product contains sodium azide: a POISONOUS AND HAZARDOUS SUBSTANCE which should be handled by trained staff only.

Applications

- Western Blot
- Immunofluorescence
- Immunoprecipitation

Immunoprecipitation of rad51 in yeast whole cell extracts.

M : Molecular weight markers (kD).

Lane 1, Wild-type strain.

Lane 2, rad51 deletion strain.

Gene Info — rad51

Entrez GeneID	2543580
---------------	-------------------------

Gene Name	rad51
-----------	-------

Gene Alias	rhp51
------------	-------

Gene Description	recombinase Rhp51
------------------	-------------------

Gene Ontology	Hyperlink
---------------	---------------------------

Other Designations	-
--------------------	---