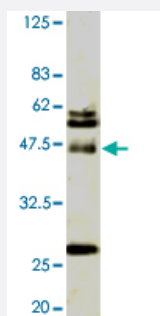


# TAF11 polyclonal antibody

Catalog # PAB1169      Size 100 uL

## Applications



### Western Blot (Cell lysate)

Detection of TAF11 by Western blotting using the TAF11 polyclonal antibody (Cat # PAB1169). Extract of budding yeast was used as antigen. The antiserum was diluted 5000 fold before use.

## Specification

<b>Product Description</b>	Rabbit polyclonal antibody raised against partial recombinant <i>Saccharomyces cerevisiae</i> TAF11.
<b>Immunogen</b>	Recombinant protein corresponding to amino acids 1-176 <i>Saccharomyces cerevisiae</i> TAF11.
<b>Host</b>	Rabbit
<b>Form</b>	Liquid
<b>Recommend Usage</b>	The optimal working dilution should be determined by the end user.
<b>Storage Buffer</b>	In buffer containing 0.09% sodium azide
<b>Storage Instruction</b>	Store at 4°C.
<b>Note</b>	This product contains sodium azide: a POISONOUS AND HAZARDOUS SUBSTANCE which should be handled by trained staff only.

## Applications

- Western Blot (Cell lysate)

Detection of TAF11 by Western blotting using the TAF11 polyclonal antibody (Cat # PAB1169) . Extract of budding yeast was using as antigen. The antiserum was diluted 5000 fold before use.

- Enzyme-linked Immunoabsorbent Assay

## Gene Info — TAF11

Entrez GeneID	<a href="#">854993</a>
Gene Name	TAF11
Gene Alias	TAF40
Gene Description	TFIID subunit (40 kDa), involved in RNA polymerase II transcription initiation, similar to histone H3 with atypical histone fold motif of Spt3-like transcription factors
Gene Ontology	<a href="#">Hyperlink</a>
Gene Summary	-
Other Designations	Taf11p