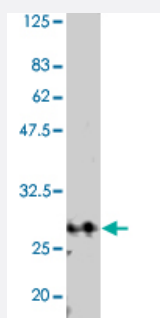


TAF10 polyclonal antibody

Catalog # PAB1168 Size 100 uL

Applications



Western Blot (Cell lysate)

Detection of TAF10 by Western blotting using the TAF10 polyclonal antibody (Cat # PAB1168) . Extract of budding yeast was using as antigen. The antiserum was diluted 5000 fold before use.

Specification

Product Description	Rabbit polyclonal antibody raised against full length recombinant <i>Saccharomyces cerevisiae</i> TAF10 .
Immunogen	Recombinant protein corresponding to full length <i>Saccharomyces cerevisiae</i> TAF10.
Host	Rabbit
Form	Liquid
Recommend Usage	The optimal working dilution should be determined by the end user.
Storage Buffer	In buffer containing 0.09% sodium azide
Storage Instruction	Store at 4°C.
Note	This product contains sodium azide: a POISONOUS AND HAZARDOUS SUBSTANCE which should be handled by trained staff only.

Applications

- Western Blot (Cell lysate)

Detection of TAF10 by Western blotting using the TAF10 polyclonal antibody (Cat # PAB1168) . Extract of budding yeast was using as antigen. The antiserum was diluted 5000 fold before use.

- Enzyme-linked Immunoabsorbent Assay

Gene Info — TAF10

Entrez GeneID	851745
Gene Name	TAF10
Gene Alias	TAF23, TAF25
Gene Description	Subunit (145 kDa) of TFIID and SAGA complexes, involved in RNA polymerase II transcription initiation and in chromatin modification
Gene Ontology	Hyperlink
Gene Summary	Taf10p
Other Designations	Taf10p