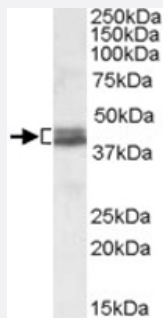


NDEL1 polyclonal antibody

Catalog # PAB11614 Size 100 ug

Applications



Western Blot (Tissue lysate)

NDEL1 polyclonal antibody (Cat # PAB11614) (0.1 ug/mL) staining of human cerebellum lysate (35 ug protein in RIPA buffer). Primary incubation was 1 hour. Detected by chemiluminescence.

Specification

Product Description Goat polyclonal antibody raised against synthetic peptide of NDEL1.

Immunogen A synthetic peptide corresponding to human NDEL1.

Sequence CRNFAKDQASRKS

Host Goat

Theoretical MW (kDa) 37, 38.4

Reactivity Human

Form Liquid

Purification Antigen affinity purification

Concentration 0.5 mg/mL

Quality Control Testing Antibody Reactive Against Synthetic Peptide.

Recommend Usage
ELISA (1:8000)
Western Blot (0.1-0.3 ug/mL)
The optimal working dilution should be determined by the end user.

Storage Buffer	In Tris saline, pH 7.3 (0.5% BSA, 0.02% sodium azide)
Storage Instruction	Store at -20°C. Aliquot to avoid repeated freezing and thawing.
Note	This product contains sodium azide: a POISONOUS AND HAZARDOUS SUBSTANCE which should be handled by trained staff only.

Applications

- Western Blot (Tissue lysate)

NDEL1 polyclonal antibody (Cat # PAB11614) (0.1 ug/mL) staining of human cerebellum lysate (35 ug protein in RIPA buffer). Primary incubation was 1 hour. Detected by chemiluminescence.

- Enzyme-linked Immunoabsorbent Assay

Gene Info — NDEL1

Entrez GeneID	81565
Protein Accession#	NP_001020750.1;NP_110435.1
Gene Name	NDEL1
Gene Alias	DKFZp451M0318, EOPA, MITAP1, NUDEL
Gene Description	nudE nuclear distribution gene E homolog (A. nidulans)-like 1
Omim ID	607538
Gene Ontology	Hyperlink
Gene Summary	This gene encodes a thiol-activated peptidase that is phosphorylated in M phase of the cell cycle. Phosphorylation regulates the cell cycle-dependent distribution of this protein, with a fraction of the protein bound strongly to centrosomes in interphase and localized to mitotic spindles in early M phase. Overall, this protein plays a role in nervous system development. Alternate transcriptional splice variants, encoding different isoforms, have been characterized. [provided by RefSeq]
Other Designations	NUDE-like protein endooligopeptidase A mitosin-associated protein MITAP1 nudE nuclear distribution gene E homolog like 1

Publication Reference

- [Neuroepithelial stem cell proliferation requires LIS1 for precise spindle orientation and symmetric division.](#)

Yingling J, Youn YH, Darling D, Toyo-Oka K, Pramparo T, Hirotsune S, Wynshaw-Boris A.

Cell 2008 Feb; 132(3):474.

Disease

- [Genetic Predisposition to Disease](#)
- [Mental Disorders](#)
- [Neuropsychological Tests](#)
- [Postmortem Changes](#)
- [Schizophrenia](#)