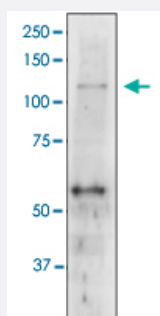


GAL11 polyclonal antibody

Catalog # PAB1161

Size 50 uL

Applications



Western Blot (Cell lysate)

Western Blot analysis of the whole cell extract of *S. cerevisiae*. The antiserum was used at 1/500 dilution. 7.5% gradient gel was used and wet system was used for blotting.

Specification

Product Description	Rabbit polyclonal antibody raised against partial recombinant <i>Saccharomyces cerevisiae</i> GAL11.
Immunogen	Recombinant protein corresponding to amino acids 1-300 <i>Saccharomyces cerevisiae</i> GAL11.
Host	Rabbit
Form	Liquid
Recommend Usage	Western Blot (1/500) The optimal working dilution should be determined by the end user.
Storage Buffer	In whole antiserum (0.09% sodium azide).
Storage Instruction	Store at -20°C. Aliquot to avoid repeated freezing and thawing.
Note	This product contains sodium azide: a POISONOUS AND HAZARDOUS SUBSTANCE which should be handled by trained staff only.

Applications

- Western Blot (Cell lysate)

Western Blot analysis of the whole cell extract of *S. cerevisiae*. The antiserum was used at 1/500 dilution. 7.5% gradient gel was used and wet system was used for blotting.

Gene Info — GAL11

Entrez GeneID	854106
Protein Accession#	P19659
Gene Name	GAL11
Gene Alias	ABE1, MED15, RAR3, SDS4, SPT13
Gene Description	Gal11p
Gene Ontology	Hyperlink
Other Designations	Subunit of the RNA polymerase II mediator complex; associates with core polymerase subunits to form the RNA polymerase II holoenzyme; affects transcription by acting as target of activators and repressors