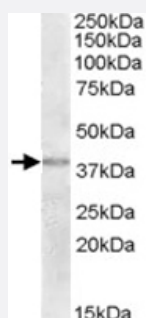


TXNDC6 polyclonal antibody

Catalog # PAB11602 Size 100 ug

Applications



Western Blot (Tissue lysate)

TXNDC6 polyclonal antibody (Cat # PAB11602) (2 ug/mL) staining of human uterus lysate (35 ug protein in RIPA buffer). Primary incubation was 1 hour. Detected by chemiluminescence.

Specification

Product Description Goat polyclonal antibody raised against synthetic peptide of TXNDC6.

Immunogen A synthetic peptide corresponding to human TXNDC6.

Sequence C-ESSTQPRLKITDLD

Host Goat

Theoretical MW (kDa) 29.7

Reactivity Human

Form Liquid

Purification Antigen affinity purification

Concentration 0.5 mg/mL

Quality Control Testing Antibody Reactive Against Synthetic Peptide.

Recommend Usage
 ELISA (1:8000)
 Western Blot (1-3 ug/mL)
 The optimal working dilution should be determined by the end user.

Storage Buffer	In Tris saline, pH 7.3 (0.5% BSA, 0.02% sodium azide)
Storage Instruction	Store at -20°C. Aliquot to avoid repeated freezing and thawing.
Note	This product contains sodium azide: a POISONOUS AND HAZARDOUS SUBSTANCE which should be handled by trained staff only.

Applications

- Western Blot (Tissue lysate)

TXNDC6 polyclonal antibody (Cat # PAB11602) (2 ug/mL) staining of human uterus lysate (35 ug protein in RIPA buffer). Primary incubation was 1 hour. Detected by chemiluminescence.

- Enzyme-linked Immunoabsorbent Assay

Gene Info — TXNDC6

Entrez GeneID	347736
Protein Accession#	NP_835231.1
Gene Name	TXNDC6
Gene Alias	MGC129586, TXL-2, TXL2
Gene Description	thioredoxin domain containing 6
Gene Ontology	Hyperlink
Other Designations	thioredoxin-like 2

Publication Reference

- [Characterization of human thioredoxin-like 2. A novel microtubule-binding thioredoxin expressed predominantly in the cilia of lung airway epithelium and spermatid manchette and axoneme.](#)

Sadek CM, Jiménez A, Damdimopoulos AE, Kieselbach T, Nord M, Gustafsson JA, Spyrou G, Davis EC, Oko R, van der Hoorn FA, Miranda-Vizuete A.

The Journal of Biological Chemistry 2003 Apr; 278(15):13133.

Application: IEM, IHC-P, Mouse, Lung, Testicular arterioles