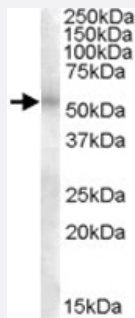


TFEB polyclonal antibody

Catalog # PAB11591 Size 100 ug

Applications



Western Blot (Tissue lysate)

TFEB polyclonal antibody (Cat # PAB11591) (1 ug/mL) staining of human lung lysate (35 ug protein in RIPA buffer). Primary incubation was 1 hour. Detected by chemiluminescence.

Specification

Product Description	Goat polyclonal antibody raised against synthetic peptide of TFEB.
Immunogen	A synthetic peptide corresponding to internal region of human TFEB.
Sequence	C-QKDLQKSRELENH
Host	Goat
Theoretical MW (kDa)	52.9
Reactivity	Human
Specificity	This antibody is expected not to cross-react to TFE3 and MITF.
Form	Liquid
Purification	Antigen affinity purification
Concentration	0.5 mg/mL
Recommend Usage	ELISA (1:1000) Western Blot (1-3 ug/mL) The optimal working dilution should be determined by the end user.

Storage Buffer	In Tris saline, pH 7.3 (0.5% BSA, 0.02% sodium azide)
Storage Instruction	Store at -20°C. Aliquot to avoid repeated freezing and thawing.
Note	This product contains sodium azide: a POISONOUS AND HAZARDOUS SUBSTANCE which should be handled by trained staff only.

Applications

- Western Blot (Tissue lysate)

TFEB polyclonal antibody (Cat # PAB11591) (1 ug/mL) staining of human lung lysate (35 ug protein in RIPA buffer). Primary incubation was 1 hour. Detected by chemiluminescence.

- Enzyme-linked Immunoabsorbent Assay

Gene Info — TFEB

Entrez GeneID	7942
Protein Accession#	NP_009093.1
Gene Name	TFEB
Gene Alias	AlphaTFEB, TCFEB, bHLHe35
Gene Description	transcription factor EB
Omim ID	600744
Gene Ontology	Hyperlink
Other Designations	OTTHUMP00000043540 OTTHUMP00000043542 OTTHUMP00000071327 T-cell transcription factor EB

Publication Reference

- [Oncogenic MITF dysregulation in clear cell sarcoma: defining the MiT family of human cancers.](#)

Davis IJ, Kim JJ, Oszolak F, Widlund HR, Rozenblatt-Rosen O, Granter SR, Du J, Fletcher JA, Denny CT, Lessnick SL, Linehan WM, Kung AL, Fisher DE.

Cancer Cell 2006 Jun; 9(6):473.