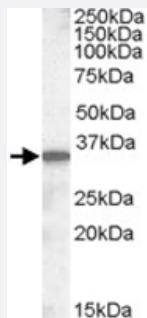


Slc10a2 polyclonal antibody

Catalog # PAB11583 Size 100 ug

Applications



Western Blot (Tissue lysate)

Slc10a2 polyclonal antibody (Cat # PAB11583) (0.5 ug/mL) staining of mouse small intestine lysate (35 ug protein in RIPA buffer). Primary incubation was 1 hour. Detected by chemiluminescence.

Specification

Product Description	Goat polyclonal antibody raised against synthetic peptide of Slc10a2.
Immunogen	A synthetic peptide corresponding to mouse Slc10a2.
Sequence	C-DETNGGFQPDEK
Host	Goat
Theoretical MW (kDa)	38.1
Reactivity	Mouse
Form	Liquid
Purification	Antigen affinity purification
Concentration	0.5 mg/mL
Quality Control Testing	Antibody Reactive Against Synthetic Peptide.
Recommend Usage	ELISA (1:32000) Western Blot (0.5-1.5 ug/mL) The optimal working dilution should be determined by the end user.

Storage Buffer	In Tris saline, pH 7.3 (0.5% BSA, 0.02% sodium azide)
Storage Instruction	Store at -20°C. Aliquot to avoid repeated freezing and thawing.
Note	This product contains sodium azide: a POISONOUS AND HAZARDOUS SUBSTANCE which should be handled by trained staff only.

Applications

- Western Blot (Tissue lysate)

Slc10a2 polyclonal antibody (Cat # PAB11583) (0.5 ug/mL) staining of mouse small intestine lysate (35 ug protein in RIPA buffer). Primary incubation was 1 hour. Detected by chemiluminescence.

- Enzyme-linked Immunoabsorbent Assay

Gene Info — Slc10a2

Entrez GeneID	20494
Protein Accession#	NP_035518.1
Gene Name	Slc10a2
Gene Alias	ASBT, ISBT
Gene Description	solute carrier family 10, member 2
Gene Ontology	Hyperlink
Gene Summary	O
Other Designations	-

Publication Reference

- [Modulation of ileal bile acid transporter \(ASBT\) activity by depletion of plasma membrane cholesterol: association with lipid rafts.](#)

Annaba F, Sarwar Z, Kumar P, Saksena S, Turner JR, Dudeja PK, Gill RK, Alrefai WA.

American Journal of Physiology. Gastrointestinal and Liver Physiology 2008 Feb; 294(2):G489.