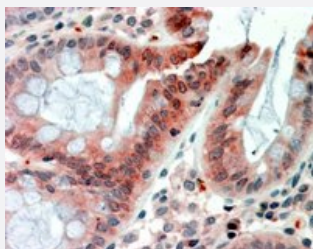


# RETNLB polyclonal antibody

Catalog # PAB11577      Size 100 ug

## Applications



### Immunohistochemistry (Formalin/PFA-fixed paraffin-embedded sections)

RETNLB polyclonal antibody (Cat # PAB11577) (2.5g/ml) staining of paraffin embedded human colon. Steamed antigen retrieval with citrate buffer pH 6, AP-staining.

## Specification

**Product Description** Goat polyclonal antibody raised against synthetic peptide of RETNLB.

**Immunogen** A synthetic peptide corresponding to human RETNLB.

**Sequence** C-DSVMDKKIKDVLNS

**Host** Goat

**Theoretical MW (kDa)** 11.7

**Reactivity** Human

**Form** Liquid

**Purification** Antigen affinity purification

**Concentration** 0.5 mg/mL

**Quality Control Testing** Antibody Reactive Against Synthetic Peptide.

**Recommend Usage** ELISA (1:128000)  
Immunohistochemistry (Formalin/PFA-fixed paraffin-embedded sections) (2-4 ug/mL)  
The optimal working dilution should be determined by the end user.

<b>Storage Buffer</b>	In Tris saline, pH 7.3 (0.5% BSA, 0.02% sodium azide)
<b>Storage Instruction</b>	Store at -20°C. Aliquot to avoid repeated freezing and thawing.
<b>Note</b>	This product contains sodium azide: a POISONOUS AND HAZARDOUS SUBSTANCE which should be handled by trained staff only.

## Applications

- Immunohistochemistry (Formalin/PFA-fixed paraffin-embedded sections)

RETNLB polyclonal antibody (Cat # PAB11577) (2.5g/ml) staining of paraffin embedded human colon. Steamed antigen retrieval with citrate buffer pH 6, AP-staining.

- Enzyme-linked Immunoabsorbent Assay

## Gene Info — RETNLB

<b>Entrez GeneID</b>	<a href="#">84666</a>
<b>Protein Accession#</b>	<a href="#">NP_115968.1</a>
<b>Gene Name</b>	RETNLB
<b>Gene Alias</b>	FIZZ1, FIZZ2, HXCP2, RELM-beta, RELMb, RELMbeta, XCP2
<b>Gene Description</b>	resistin like beta
<b>Omim ID</b>	<a href="#">605645</a>
<b>Gene Ontology</b>	<a href="#">Hyperlink</a>
<b>Other Designations</b>	C/EBP-epsilon regulated myeloid-specific secreted cysteine-rich protein precursor 2 colon and small intestine-specific cysteine-rich protein cysteine-rich secreted A12-alpha-like protein 1 found in inflammatory zone 1

## Publication Reference

- [Absence of bacterially induced RELMbeta reduces injury in the dextran sodium sulfate model of colitis.](#)

McVay LD, Keilbaugh SA, Wong TM, Kierstein S, Shin ME, Lehrke M, Lefterova MI, Shifflett DE, Barnes SL, Cominelli F, Cohn SM, Hecht G, Lazar MA, Haczku A, Wu GD.

The Journal of Clinical Investigation 2006 Nov; 116(11):2914.

Application: IHC, Mouse, Colitis

## Disease

- [Asthma](#)