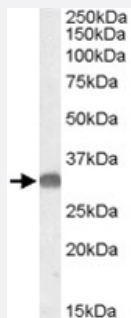


OTUB1 polyclonal antibody

Catalog # PAB11566 Size 100 ug

Applications



Western Blot (Tissue lysate)

OTUB1 polyclonal antibody (Cat # PAB11566) (0.05 ug/mL) staining of mouse brain lysate (35 ug protein in RIPA buffer). Primary incubation was 1 hour. Detected by chemiluminescence.

Specification

Product Description	Goat polyclonal antibody raised against synthetic peptide of OTUB1.
Immunogen	A synthetic peptide corresponding to human OTUB1.
Sequence	C-YKEYAEDDNIYQQK
Host	Goat
Theoretical MW (kDa)	31.3
Reactivity	Mouse
Form	Liquid
Purification	Antigen affinity purification
Concentration	0.5 mg/mL
Quality Control Testing	Antibody Reactive Against Synthetic Peptide.
Recommend Usage	ELISA (1:64000) Western Blot (0.03-0.1 ug/mL) The optimal working dilution should be determined by the end user.

Storage Buffer	In Tris saline, pH 7.3 (0.5% BSA, 0.02% sodium azide)
Storage Instruction	Store at -20°C. Aliquot to avoid repeated freezing and thawing.
Note	This product contains sodium azide: a POISONOUS AND HAZARDOUS SUBSTANCE which should be handled by trained staff only.

Applications

- Western Blot (Tissue lysate)

OTUB1 polyclonal antibody (Cat # PAB11566) (0.05 ug/mL) staining of mouse brain lysate (35 ug protein in RIPA buffer). Primary incubation was 1 hour. Detected by chemiluminescence.

- Enzyme-linked Immunoabsorbent Assay

Gene Info — OTUB1

Entrez GeneID	55611
Protein Accession#	NP_060140.2
Gene Name	OTUB1
Gene Alias	FLJ20113, FLJ40710, HSPC263, MGC111158, MGC4584, OTB1, OTU1
Gene Description	OTU domain, ubiquitin aldehyde binding 1
Omim ID	608337
Gene Ontology	Hyperlink
Gene Summary	The product of this gene is a member of the OTU (ovarian tumor) superfamily of predicted cysteine proteases. The encoded protein is a highly specific ubiquitin iso-peptidase, and cleaves ubiquitin from branched poly-ubiquitin chains but not from ubiquitinated substrates. It interacts with another ubiquitin protease and an E3 ubiquitin ligase that inhibits cytokine gene transcription in the immune system. It is proposed to function in specific ubiquitin-dependent pathways, possibly by providing an editing function for polyubiquitin chain growth. Alternative splicing results in multiple transcript variants. [provided by RefSeq]
Other Designations	OTU-domain Uba1-binding 1 otubain 1 ubiquitin-specific protease otubain 1

Publication Reference

- [Identification of otubain 1 as a novel substrate for the Yersinia protein kinase using chemical genetics and mass spectrometry.](#)

Juris SJ, Shah K, Shokat K, Dixon JE, Vacratsis PO.

FEBS Letters 2006 Jan; 580(1):179.