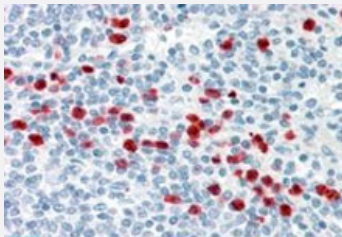


GCC2 polyclonal antibody

Catalog # PAB11531 Size 100 ug

Applications



Immunohistochemistry (Formalin/PFA-fixed paraffin-embedded sections)

GCC2 polyclonal antibody (Cat # PAB11531)(3.8 ug/mL) staining of paraffin embedded human spleen. Steamed antigen retrieval with citrate buffer pH 6, AP-staining.

Specification

Product Description	Goat polyclonal antibody raised against synthetic peptide of GCC2.
Immunogen	A synthetic peptide corresponding to internal region of human GCC2.
Sequence	C-QKLTNKNKIED
Host	Goat
Theoretical MW (kDa)	185, 196
Reactivity	Human
Form	Liquid
Purification	Antigen affinity purification
Concentration	0.5 mg/mL
Recommend Usage	ELISA (1:16000) Immunohistochemistry (Formalin/PFA-fixed paraffin-embedded sections) (3-6 ug/mL) The optimal working dilution should be determined by the end user.
Storage Buffer	In Tris saline, pH 7.3 (0.5% BSA, 0.02% sodium azide)

Storage Instruction

Store at -20°C.
Aliquot to avoid repeated freezing and thawing.

Note

This product contains sodium azide: a POISONOUS AND HAZARDOUS SUBSTANCE which should be handled by trained staff only.

Applications

- Immunohistochemistry (Formalin/PFA-fixed paraffin-embedded sections)

GCC2 polyclonal antibody (Cat # PAB11531)(3.8 ug/mL) staining of paraffin embedded human spleen. Steamed antigen retrieval with citrate buffer pH 6, AP-staining.

- Enzyme-linked Immunoabsorbent Assay

Gene Info — GCC2

Entrez GeneID[9648](#)**Protein Accession#**[NP_055450.1; NP_852118.1](#)**Gene Name**

GCC2

Gene Alias

GCC185, KIAA0336

Gene Description

GRIP and coiled-coil domain containing 2

Gene Ontology[Hyperlink](#)**Gene Summary**

The protein encoded by this gene is a peripheral membrane protein localized to the trans-Golgi network. It is sensitive to brefeldin A. This encoded protein contains a GRIP domain which is thought to be used in targeting. Alternative splicing results in multiple transcript variants. [provided by RefSeq]

Other Designations

CLL-associated antigen KW-11|CTCL tumor antigen se1-1|GRIP and coiled-coil domain-containing 2|GRIP coiled-coil protein GCC185

Publication Reference

- [Asymmetric CLASP-dependent nucleation of noncentrosomal microtubules at the trans-Golgi network.](#)

Efimov A, Kharitonov A, Efimova N, Loncarek J, Miller PM, Andreyeva N, Gleeson P, Galjart N, Maia AR, McLeod IX, Yates JR 3rd, Maiato H, Khodjakov A, Akhmanova A, Kaverina I.

Developmental Cell 2007 Jun; 12(6):917.

Application: WB-Tr, Human, RPE1 cells