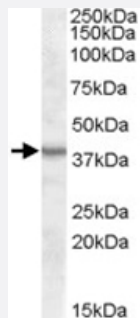


ASNA1 polyclonal antibody

Catalog # PAB11499 Size 100 ug

Applications



Western Blot (Tissue lysate)

ASNA1 polyclonal antibody (Cat # PAB11499) (1 ug/mL) staining of mouse kidney lysate (35 ug protein in RIPA buffer). Primary incubation was 1 hour. Detected by chemiluminescence.

Specification

Product Description	Goat polyclonal antibody raised against synthetic peptide of ASNA1.
Immunogen	A synthetic peptide corresponding to human ASNA1.
Sequence	C-PHEVRGADKVNT
Host	Goat
Theoretical MW (kDa)	38.8
Reactivity	Human, Mouse, Rat
Form	Liquid
Purification	Antigen affinity purification
Concentration	0.5 mg/mL
Quality Control Testing	Antibody Reactive Against Synthetic Peptide.
Recommend Usage	ELISA (1:2000) Western Blot (0.3-1 ug/mL) The optimal working dilution should be determined by the end user.

Storage Buffer	In Tris saline, pH 7.3 (0.5% BSA, 0.02% sodium azide)
Storage Instruction	Store at -20°C. Aliquot to avoid repeated freezing and thawing.
Note	This product contains sodium azide: a POISONOUS AND HAZARDOUS SUBSTANCE which should be handled by trained staff only.

Applications

- Western Blot (Tissue lysate)

ASNA1 polyclonal antibody (Cat # PAB11499) (1 ug/mL) staining of mouse kidney lysate (35 ug protein in RIPA buffer). Primary incubation was 1 hour. Detected by chemiluminescence.

- Enzyme-linked Immunoabsorbent Assay

Gene Info — ASNA1

Entrez GeneID	439
Protein Accession#	NP_004308.2
Gene Name	ASNA1
Gene Alias	ARSA-I, ARSA1, MGC3821
Gene Description	arsA arsenite transporter, ATP-binding, homolog 1 (bacterial)
Omim ID	601913
Gene Ontology	Hyperlink
Gene Summary	ASNA1 is the human homolog of the bacterial arsA gene. In E. coli, ArsA ATPase is the catalytic component of a multisubunit oxyanion pump that is responsible for resistance to arsenicals and antimetabolites.[supplied by OMIM]
Other Designations	arsA arsenite transporter, ATP-binding, homolog 1

Publication Reference

- [ASNA-1 positively regulates insulin secretion in C. elegans and mammalian cells.](#)

Kao G, Nordenson C, Still M, Ronnlund A, Tuck S, Naredi P.

Cell 2007 Feb; 128(3):577.

Application: IF, IHC-P, WB, C. elegans, Humans, Mouse, Human pancreatic tissues, Mouse insulinoma cell line NIT-1