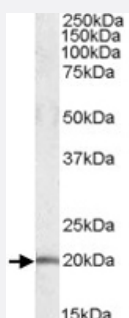


# U2AF1L4 polyclonal antibody

Catalog # PAB11465

Size 100 ug

## Applications



### Western Blot (Tissue lysate)

U2AF1L4 polyclonal antibody (Cat # PAB11465) (0.1 ug/mL) staining of human cerebellum lysate (35 ug protein in RIPA buffer). Primary incubation was 1 hour. Detected by chemiluminescence.

## Specification

**Product Description** Goat polyclonal antibody raised against synthetic peptide of U2AF1L4.

**Immunogen** A synthetic peptide corresponding to human U2AF1L4.

**Sequence** C-EDGERAVAELSNR

**Host** Goat

**Theoretical MW (kDa)** 21.3, 22

**Reactivity** Human

**Form** Liquid

**Purification** Antigen affinity purification

**Concentration** 0.5 mg/mL

**Quality Control Testing** Antibody Reactive Against Synthetic Peptide.

**Recommend Usage**  
 ELISA (1:32000)  
 Western Blot (0.1-0.3 ug/mL)  
 The optimal working dilution should be determined by the end user.

<b>Storage Buffer</b>	In Tris saline, pH 7.3 (0.5% BSA, 0.02% sodium azide)
<b>Storage Instruction</b>	Store at -20°C. Aliquot to avoid repeated freezing and thawing.
<b>Note</b>	This product contains sodium azide: a POISONOUS AND HAZARDOUS SUBSTANCE which should be handled by trained staff only.

## Applications

- Western Blot (Tissue lysate)

U2AF1L4 polyclonal antibody (Cat # PAB11465) (0.1 ug/mL) staining of human cerebellum lysate (35 ug protein in RIPA buffer). Primary incubation was 1 hour. Detected by chemiluminescence.

- Enzyme-linked Immunoabsorbent Assay

## Gene Info — U2AF1L4

<b>Entrez GeneID</b>	<a href="#">199746</a>
<b>Protein Accession#</b>	<a href="#">NP_001035515.1;NP_659424.2</a>
<b>Gene Name</b>	U2AF1L4
<b>Gene Alias</b>	FLJ35525, MGC33901, U2AF1-RS3, U2AF1L3, U2AF1L3V1, U2AF1RS3, U2af26
<b>Gene Description</b>	U2 small nuclear RNA auxiliary factor 1-like 4
<b>Omim ID</b>	<a href="#">601080</a>
<b>Gene Ontology</b>	<a href="#">Hyperlink</a>
<b>Other Designations</b>	U2 small nuclear RNA auxiliary factor 1-like 3 U2(RNU2) small nuclear RNA auxiliary factor 1-like 3

## Publication Reference

- [Cloning and characterization of a novel splice variant of human U2AF1L3 gene.](#)

Chen F, Ji C, Dou T, Zheng N, Qiu R, Peng J, Fang W, Feng C, Xie Y, Mao Y.

DNA Sequence 2006 Aug; 17(4):282.