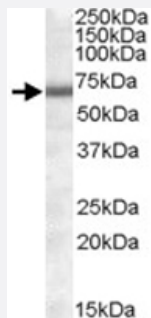


COL4A3BP polyclonal antibody

Catalog # PAB11433 Size 100 ug

Applications



Western Blot (Tissue lysate)

COL4A3BP polyclonal antibody (Cat # PAB11433) (1 ug/mL) staining of human heart lysate (35 ug protein in RIPA buffer). Primary incubation was 1 hour. Detected by chemiluminescence.

Specification

Product Description	Goat polyclonal antibody raised against synthetic peptide of COL4A3BP.
Immunogen	A synthetic peptide corresponding to amino acids 396-411 of human COL4A3BP.
Sequence	C-KREDSWQKRLDKETEK
Host	Goat
Theoretical MW (kDa)	70.8, 68
Reactivity	Human
Form	Liquid
Purification	Antigen affinity purification
Concentration	0.5 mg/mL
Quality Control Testing	Antibody Reactive Against Synthetic Peptide.
Recommend Usage	ELISA (1:2000) Western Blot (1-3 ug/mL) The optimal working dilution should be determined by the end user.

Storage Buffer	In Tris saline, pH 7.3 (0.5% BSA, 0.02% sodium azide)
Storage Instruction	Store at -20°C. Aliquot to avoid repeated freezing and thawing.
Note	This product contains sodium azide: a POISONOUS AND HAZARDOUS SUBSTANCE which should be handled by trained staff only.

Applications

- Western Blot (Tissue lysate)

COL4A3BP polyclonal antibody (Cat # PAB11433) (1 ug/mL) staining of human heart lysate (35 ug protein in RIPA buffer). Primary incubation was 1 hour. Detected by chemiluminescence.

- Enzyme-linked Immunoabsorbent Assay

Gene Info — COL4A3BP

Entrez GeneID	10087
Protein Accession#	NP_005704.1;NP_112729.1
Gene Name	COL4A3BP
Gene Alias	CERT, CERTL, FLJ20597, GPBP, STARD11
Gene Description	collagen, type IV, alpha 3 (Goodpasture antigen) binding protein
Omim ID	604677
Gene Ontology	Hyperlink

Gene Summary	This gene encodes a kinase that specifically phosphorylates the N-terminal region of the non-collagenous domain of the alpha 3 chain of type IV collagen, known as the Goodpasture antigen. Good pasture disease is the result of an autoimmune response directed at this antigen. One isoform of this protein is also involved in ceramide intracellular transport. Three transcript variants encoding different isoforms have been found for this gene. [provided by RefSeq]
Other Designations	Goodpasture antigen-binding protein OTTHUMP00000128248 OTTHUMP00000128249 START domain containing 11 STAR-related lipid transfer (START) domain containing 11 alpha 3 type IV collagen binding protein ceramide transporter lipid-transfer protein CERTL

Publication Reference

- [Structural basis for specific lipid recognition by CERT responsible for nonvesicular trafficking of ceramide.](#)

Kudo N, Kumagai K, Tomishige N, Yamaji T, Wakatsuki S, Nishijima M, Hanada K, Kato R.

PNAS 2008 Jan; 105(2):488.