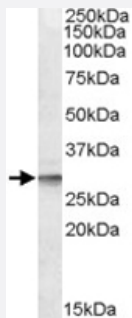


DPM1 polyclonal antibody

Catalog # PAB11424 Size 100 ug

Applications



Western Blot (Tissue lysate)

DPM1 polyclonal antibody (Cat # PAB11424) (0.1 ug/mL) staining of human liver lysate (35 ug protein in RIPA buffer). Primary incubation was 1 hour. Detected by chemiluminescence.

Specification

Product Description Goat polyclonal antibody raised against synthetic peptide of DPM1.

Immunogen A synthetic peptide corresponding to human DPM1.

Sequence RELEVRSPRQNKYS-C

Host Goat

Theoretical MW (kDa) 29.6

Reactivity Human

Form Liquid

Purification Antigen affinity purification

Concentration 0.5 mg/mL

Quality Control Testing Antibody Reactive Against Synthetic Peptide.

Recommend Usage
 ELISA (1:32000)
 Western Blot (0.1-0.3 ug/mL)
 The optimal working dilution should be determined by the end user.

Storage Buffer	In Tris saline, pH 7.3 (0.5% BSA, 0.02% sodium azide)
Storage Instruction	Store at -20°C. Aliquot to avoid repeated freezing and thawing.
Note	This product contains sodium azide: a POISONOUS AND HAZARDOUS SUBSTANCE which should be handled by trained staff only.

Applications

- Western Blot (Tissue lysate)

DPM1 polyclonal antibody (Cat # PAB11424) (0.1 ug/mL) staining of human liver lysate (35 ug protein in RIPA buffer). Primary incubation was 1 hour. Detected by chemiluminescence.

- Enzyme-linked Immunoabsorbent Assay

Gene Info — DPM1

Entrez GeneID	8813
Protein Accession#	NP_003850.1
Gene Name	DPM1
Gene Alias	CDGIE, MPDS
Gene Description	dolichyl-phosphate mannosyltransferase polypeptide 1, catalytic subunit
Omim ID	603503 608799
Gene Ontology	Hyperlink
Gene Summary	Dolichol-phosphate mannose (Dol-P-Man) serves as a donor of mannosyl residues on the luminal side of the endoplasmic reticulum (ER). Lack of Dol-P-Man results in defective surface expression of GPI-anchored proteins. Dol-P-Man is synthesized from GDP-mannose and dolichol-phosphate on the cytosolic side of the ER by the enzyme dolichyl-phosphate mannosyltransferase. Human DPM1 lacks a carboxy-terminal transmembrane domain and signal sequence and is regulated by DPM2. [provided by RefSeq]
Other Designations	OTTHUMP00000031285[dolichol monophosphate mannose synthase][dolichyl-phosphate mannosyltransferase polypeptide 1]

Publication Reference

- [DPM1, the catalytic subunit of dolichol-phosphate mannose synthase, is tethered to and stabilized on the endoplasmic reticulum membrane by DPM3.](#)

Ashida H, Maeda Y, Kinoshita T.

The Journal of Biological Chemistry 2006 Jan; 281(2):896.

Pathway

- [Metabolic pathways](#)
- [N-Glycan biosynthesis](#)

Disease

- [Disease Progression](#)
- [Disease Susceptibility](#)
- [HIV Infections](#)