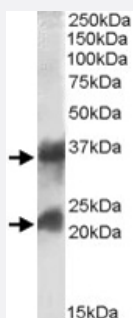


CLTA/CLTB polyclonal antibody

Catalog # PAB11423 Size 100 ug

Applications



Western Blot (Tissue lysate)

CLTA/CLTB polyclonal antibody (Cat # PAB11423) (0.1 ug/mL) staining of human frontal cortex lysate (35 ug protein in RIPA buffer). Primary incubation was 1 hour. Detected by chemiluminescence.

Specification

Product Description Goat polyclonal antibody raised against synthetic peptide of CLTA/CLTB.

Immunogen A synthetic peptide corresponding to human CLTA/CLTB.

Sequence CDFNPKSSKQAKD

Host Goat

Theoretical MW (kDa) 23.7, 27.1, 25.7, 23

Reactivity Human

Form Liquid

Purification Antigen affinity purification

Concentration 0.5 mg/mL

Quality Control Testing Antibody Reactive Against Synthetic Peptide.

Recommend Usage
 ELISA (1:32000)
 Western Blot (0.1-0.3 ug/mL)
 The optimal working dilution should be determined by the end user.

Storage Buffer	In Tris saline, pH 7.3 (0.5% BSA, 0.02% sodium azide)
Storage Instruction	Store at -20°C. Aliquot to avoid repeated freezing and thawing.
Note	This product contains sodium azide: a POISONOUS AND HAZARDOUS SUBSTANCE which should be handled by trained staff only.

Applications

- Western Blot (Tissue lysate)

CLTA/CLTB polyclonal antibody (Cat # PAB11423) (0.1 ug/mL) staining of human frontal cortex lysate (35 ug protein in RIPA buffer). Primary incubation was 1 hour. Detected by chemiluminescence.

- Enzyme-linked Immunoabsorbent Assay

Gene Info — CLTA

Entrez GeneID	1211
Protein Accession#	NP_001824.1 (Gene ID : 1211);NP_009027.1 (Gene ID : 1211);NP_001070145.1 (Gene ID : 1211);NP_001825.1 (Gene ID : 1212);NP_009028.1 (Gene ID : 1212)
Gene Name	CLTA
Gene Alias	LCA
Gene Description	clathrin, light chain (Lca)
Omim ID	118960
Gene Ontology	Hyperlink
Gene Summary	Clathrin is a large, soluble protein composed of heavy and light chains. It functions as the main structural component of the lattice-type cytoplasmic face of coated pits and vesicles which entrap specific macromolecules during receptor-mediated endocytosis. This gene encodes one of two clathrin light chain proteins which are believed to function as regulatory elements. Alternative splicing results in multiple transcript variants. [provided by RefSeq]
Other Designations	OTTHUMP00000021365 OTTHUMP00000021366 clathrin, light polypeptide (Lca) clathrin, light polypeptide A

Gene Info — CLTB

Entrez GeneID	1212
Protein Accession#	NP_001824.1 (Gene ID : 1211);NP_009027.1 (Gene ID : 1211);NP_001070145.1 (Gene ID : 1211);NP_001825.1 (Gene ID : 1212);NP_009028.1 (Gene ID : 1212)
Gene Name	CLTB
Gene Alias	LCB
Gene Description	clathrin, light chain (Lcb)
Omim ID	118970
Gene Ontology	Hyperlink
Gene Summary	Clathrin is a large, soluble protein composed of heavy and light chains. It functions as the main structural component of the lattice-type cytoplasmic face of coated pits and vesicles which entrap specific macromolecules during receptor-mediated endocytosis. This gene encodes one of two clathrin light chain proteins which are believed to function as regulatory elements. Alternative splicing results in multiple transcript variants. [provided by RefSeq]
Other Designations	clathrin, light polypeptide clathrin, light polypeptide (Lcb)

Publication Reference

- [Clathrin light chains function in mannose phosphate receptor trafficking via regulation of actin assembly.](#)
Poupon V, Girard M, Legendre-Guillemain V, Thomas S, Bourbonniere L, Philie J, Bright NA, McPherson PS.
PNAS 2007 Dec; 105(1):168.
- [Clathrin in gastric acid secretory \(parietal\) cells: biochemical characterization and subcellular localization.](#)
Okamoto CT, Duman JG, Tyagarajan K, McDonald KL, Jeng YY, McKinney J, Forte TM, Forte JG.
American Journal of Physiology. Cell Physiology 2000 Sep; 279(3):C833.
Application: IF, WB-Ti, Pig, Brain, Gastric microsomes, Parietal cells

Pathway

- [Endocytosis](#)
- [Endocytosis](#)
- [Lysosome](#)
- [Lysosome](#)

Disease

- [Cardiovascular Diseases](#)
- [Cardiovascular Diseases](#)
- [Diabetes Mellitus](#)
- [Diabetes Mellitus](#)
- [Edema](#)
- [Edema](#)