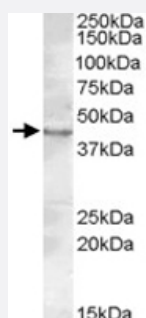


LASS3 polyclonal antibody

Catalog # PAB11409 Size 100 ug

Applications



Western Blot (Tissue lysate)

LASS3 polyclonal antibody (Cat # PAB11409) (0.2 ug/mL) staining of rat testis lysate (35 ug protein in RIPA buffer). Primary incubation was 1 hour. Detected by chemiluminescence.

Specification

Product Description Goat polyclonal antibody raised against synthetic peptide of LASS3.

Immunogen A synthetic peptide corresponding to human LASS3.

Sequence C-RAERHLIPNGQHG

Host Goat

Theoretical MW (kDa) 46.3

Reactivity Rat

Form Liquid

Purification Antigen affinity purification

Concentration 0.5 mg/mL

Quality Control Testing Antibody Reactive Against Synthetic Peptide.

Recommend Usage
ELISA (1:32000)
Western Blot (2-3 ug/mL)
The optimal working dilution should be determined by the end user.

Storage Buffer	In Tris saline, pH 7.3 (0.5% BSA, 0.02% sodium azide)
Storage Instruction	Store at -20°C. Aliquot to avoid repeated freezing and thawing.
Note	This product contains sodium azide: a POISONOUS AND HAZARDOUS SUBSTANCE which should be handled by trained staff only.

Applications

- Western Blot (Tissue lysate)

LASS3 polyclonal antibody (Cat # PAB11409) (0.2 ug/mL) staining of rat testis lysate (35 ug protein in RIPA buffer). Primary incubation was 1 hour. Detected by chemiluminescence.

- Enzyme-linked Immunoabsorbent Assay

Gene Info — LASS3

Entrez GeneID	204219
Protein Accession#	NP_849164.2
Gene Name	LASS3
Gene Alias	CerS3, MGC27091
Gene Description	LAG1 homolog, ceramide synthase 3
Gene Ontology	Hyperlink
Gene Summary	O
Other Designations	LAG1 longevity assurance homolog 3 OTTHUMP00000194816

Publication Reference

- [LASS3 \(longevity assurance homologue 3\) is a mainly testis-specific \(dihydro\)ceramide synthase with relatively broad substrate specificity.](#)

Mizutani Y, Kihara A, Igarashi Y.

The Biochemical Journal 2006 Sep; 398(3):531.