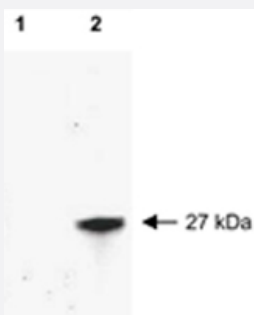


RFP polyclonal antibody

Catalog # PAB11376 Size 100 ug

Applications

Western Blot (Transfected lysate)



Western blot of RFP recombinant protein detected with RFP polyclonal antibody (Cat # PAB11376).

Lane 1 shows no reaction against a GFP recombinant protein present in 10 ug of HeLa cell extract.

Lane 2 shows a single band detected in 10 ug of a HeLa lysate containing RFP recombinant protein as a 27 kDa band.

A 4-12% Bis-Tris gradient gel (Invitrogen) was used for SDS-PAGE. The membrane was blocked and then probed with RFP polyclonal antibody (Cat # PAB11376) diluted 1:2,500 for 1 h at RT.

Specification

Product Description	Rabbit polyclonal antibody raised against full length recombinant RFP.
Immunogen	Recombinant protein corresponding to full length mushroom polyp coral Discosoma RFP.
Host	Rabbit
Specificity	No reaction was observed against human, Mouse or Rat serum proteins. ELISA was used to confirm specificity at less than 0.1% of target signal.
Form	Liquid
Quality Control Testing	Antibody Reactive Against Recombinant Protein.
Recommend Usage	ELISA (1:160000) Western Blot (1:2000-1:10000) Immunohistochemistry (1:2000-1:10000) The optimal working dilution should be determined by the end user.
Storage Buffer	In 20 mM potassium phosphate buffer, 150 mM NaCl, pH 7.2 (0.01% sodium azide)

Storage Instruction

Store at 4°C. For long term storage store at -20°C.
Aliquot to avoid repeated freezing and thawing.

Note

This product contains sodium azide: a POISONOUS AND HAZARDOUS SUBSTANCE which should be handled by trained staff only.

Applications

- Western Blot (Transfected lysate)

Western blot of RFP recombinant protein detected with RFP polyclonal antibody (Cat # PAB11376).

Lane 1 shows no reaction against a GFP recombinant protein present in 10 ug of HeLa cell extract.

Lane 2 shows a single band detected in 10 ug of a HeLa lysate containing RFP recombinant protein as a 27 kDa band.

A 4-12% Bis-Tris gradient gel (Invitrogen) was used for SDS-PAGE. The membrane was blocked and then probed with RFP polyclonal antibody (Cat # PAB11376) diluted 1:2,500 for 1 h at RT.

- Immunohistochemistry

- Enzyme-linked Immunoabsorbent Assay