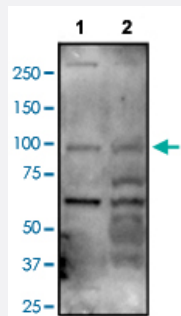


# ARHGAP12 polyclonal antibody

Catalog # PAB1136      Size 100 uL

## Applications



### Western Blot (Cell lysate)

Western blot analysis of Lane 1: A549 and Lane 2: MCF-7 cell lysates with ARHGAP12 polyclonal antibody (Cat # PAB1136).

## Specification

<b>Product Description</b>	Rabbit polyclonal antibody raised against synthetic peptide of human ARHGAP12.
<b>Immunogen</b>	A synthetic peptide (conjugated with KLH) corresponding to amino acids 40-56 of human ARHGAP12.
<b>Sequence</b>	ILVKKTNDWWQVKPD
<b>Host</b>	Rabbit
<b>Reactivity</b>	Human, Mouse
<b>Form</b>	Liquid
<b>Recommend Usage</b>	ELISA (1:100-1:1000) Western Blot (1:500) The optimal dilution should be determined by the end user.
<b>Storage Buffer</b>	In serum (0.025% sodium azide)
<b>Storage Instruction</b>	Store at -20°C. Aliquot to avoid repeated freezing and thawing.

**Note**

This product contains sodium azide: a POISONOUS AND HAZARDOUS SUBSTANCE which should be handled by trained staff only.

## Applications

- Western Blot (Cell lysate)

Western blot analysis of Lane 1: A549 and Lane 2: MCF-7 cell lysates with ARHGAP12 polyclonal antibody (Cat # PAB1136).

- Enzyme-linked Immunoabsorbent Assay

## Gene Info — ARHGAP12

Entrez GeneID [94134](#)

Protein Accession# [NP\\_060757](#)

Gene Name ARHGAP12

Gene Alias DKFZp779N2050, FLJ10971, FLJ20737, FLJ21785, FLJ45709

Gene Description Rho GTPase activating protein 12

Omim ID [610577](#)

Gene Ontology [Hyperlink](#)

**Gene Summary** RHO GTPases (see ARHA, MIM 165390) that participate in a wide variety of cellular processes are active in their GTP-bound form and inactive in their GDP-bound form. The hydrolysis of GTP and the inactivation of these GTPases are regulated by GTPase-activating proteins (GAPs), such as ARHGAP12 (Zhang et al., 2002 [PubMed 11854031]).[supplied by OMIM]

**Other Designations** OTTHUMP00000019410

## Disease

- [Alzheimer Disease](#)
- [Genetic Predisposition to Disease](#)