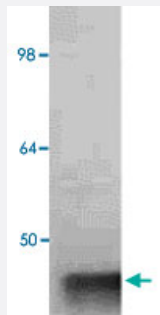


ALDOA polyclonal antibody

Catalog # PAB11351 Size 100 ug

Applications

Western Blot (Cell lysate)



IgG purified ALDOA polyclonal antibody (Cat # PAB11351) to rabbit muscle aldolase was used at a 1:1000 dilution to detect human aldolase by Western blot.

A whole cell lysate prepared from human derived A293 cells was loaded on a 4-12% tris glycine gradient gel for SDS-PAGE.

The gel was transferred to nitrocellulose using standard techniques. Antibody reaction with the membrane occurred overnight at 4°C in TTBS supplemented with 2% non-fat dry milk.

Color was allowed to develop using Super Signal West Pico Chemiluminescent Substrate (PIERCE).

This antibody clearly detects a band at ~41 KDa consistent with human aldolase.

Specification

Product Description Goat polyclonal antibody raised against native ALDOA.

Immunogen Native purified ALDOA from rabbit muscle.

Host Goat

Reactivity Rabbit

Form Lyophilized

Quality Control Testing Antibody Reactive Against Native Purified Protein.

Recommend Usage Sandwich ELISA (1:10000-1:40000)
Immunoprecipitation (5 ul)
The optimal working dilution should be determined by the end user.

Storage Buffer	In 20 mM potassium phosphate buffer, 150 mM NaCl, pH 7.2 (0.01% sodium azide)
Storage Instruction	Store at 4°C on dry atmosphere. After reconstitution with deionized water, store at -20°C or lower. Aliquot to avoid repeated freezing and thawing.
Note	This product contains sodium azide: a POISONOUS AND HAZARDOUS SUBSTANCE which should be handled by trained staff only.

Applications

- Western Blot (Cell lysate)

IgG purified ALDOA polyclonal antibody (Cat # PAB11351) to rabbit muscle aldolase was used at a 1:1000 dilution to detect human aldolase by Western blot.

A whole cell lysate prepared from human derived A293 cells was loaded on a 4-12% tris glycine gradient gel for SDS-PAGE.

The gel was transferred to nitrocellulose using standard techniques. Antibody reaction with the membrane occurred overnight at 4°C in TTBS supplemented with 2% non-fat dry milk.

Color was allowed to develop using Super Signal West Pico Chemiluminescent Substrate (PIERCE).

This antibody clearly detects a band at ~41 KDa consistent with human aldolase.

- Enzyme-linked Immunoabsorbent Assay

Gene Info — ALDOA

Entrez GeneID	100009055
---------------	---------------------------

Gene Name	ALDOA
-----------	-------

Gene Alias	-
------------	---

Gene Description	aldolase A
------------------	------------

Gene Ontology	Hyperlink
---------------	---------------------------

Other Designations	-
--------------------	---