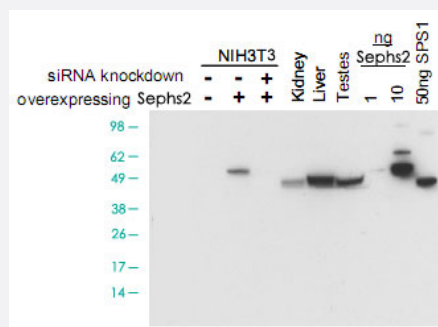


Sephs2 polyclonal antibody

Catalog # PAB11323 Size 100 ug

Applications

Western Blot



Western blot using Sephs2 polyclonal antibody (Cat # PAB11323) shows detection of Sephs2 in NIH/3T3 cells over-expressing this protein. No signal is seen in control lysates or in lysates from cells over-expressing the protein after pre-treatment with Sephs2 siRNA. Endogenous Sephs2 can be detected in mouse kidney, liver and testes tissue lysates. Partial cross-reactivity is seen against recombinant SPS1. The primary antibody was used at a 1 : 1000 dilution. Personal Communication, D. Hatfield, NCI, Bethesda, MD.

Specification

| | |
|--------------------------------|---|
| Product Description | Rabbit polyclonal antibody raised against full length recombinant Sephs2. |
| Immunogen | Recombinant protein corresponding to full length mouse Sephs2. |
| Host | Rabbit |
| Reactivity | Human, Mouse |
| Specificity | This antibody reacts with mouse SPS2 and shows partial cross-reactivity with SPS1. |
| Form | Liquid |
| Quality Control Testing | Antibody Reactive Against Recombinant Protein. |
| Recommend Usage | ELISA (1:5000-1:20000) Western Blot (1:500-1:2000) The optimal working dilution should be determined by the end user. |
| Storage Buffer | In 20 mM KH ₂ PO ₄ , 150 mM NaCl, pH 7.2 (0.01% sodium azide) |

Storage Instruction

Store at 4°C. For long term storage store at -20°C.
Aliquot to avoid repeated freezing and thawing.

Note

This product contains sodium azide: a POISONOUS AND HAZARDOUS SUBSTANCE which should be handled by trained staff only.

Applications

- Western Blot

Western blot using Sephs2 polyclonal antibody (Cat # PAB11323) shows detection of Sephs2 in NIH/3T3 cells over-expressing this protein.
No signal is seen in control lysates or in lysates from cells over-expressing the protein after pre-treatment with Sephs2 siRNA.
Endogenous Sephs2 can be detected in mouse kidney, liver and testes tissue lysates.
Partial cross-reactivity is seen against recombinant SPS1.
The primary antibody was used at a 1 : 1000 dilution.
Personal Communication, D. Hatfield, NCI, Bethesda, MD.

- Immunoprecipitation

- Enzyme-linked Immunoabsorbent Assay

Gene Info — Sephs2

Entrez GeneID[20768](#)**Protein Accession#**[AAC53024;P97364](#)**Gene Name**

Sephs2

Gene Alias

Sps2, Ysg3

Gene Description

selenophosphate synthetase 2

Gene Ontology[Hyperlink](#)**Other Designations**

clone 1000|the SelD gene product

Publication Reference

- [Selenophosphate synthetase genes from lung adenocarcinoma cells: Sps1 for recycling L-selenocysteine and Sps2 for selenite assimilation.](#)

Tamura T, Yamamoto S, Takahata M, Sakaguchi H, Tanaka H, Stadtman TC, Inagaki K.

PNAS 2004 Nov; 101(46):16162.

- [Fetal mouse selenophosphate synthetase 2 \(SPS2\): biological activities of mutant forms in Escherichia coli.](#)

Kim TS, Yu MH, Chung YW, Kim J, Choi EJ, Ahn K, Kim IY.

Molecules and Cells 1999 Aug; 9(4):422.

- [Cloning and functional characterization of human selenophosphate synthetase, an essential component of selenoprotein synthesis.](#)

Low SC, Harney JW, Berry MJ.

The Journal of Biological Chemistry 1995 Sep; 270(37):21659.