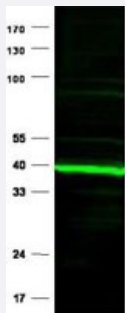


Ppard polyclonal antibody

Catalog # PAB11322 Size 100 ug

Applications

Western Blot (Tissue lysate)



Immunoblotting of Ppard polyclonal antibody (Cat # PAB11322) is shown to detect a predominant band at ~ 43 kDa corresponding to Ppard present in mouse heart tissue lysates.

Preincubation of the antibody with the immunizing peptide completely blocks reactivity with this band (data not shown).

Approximately 30 ug of lysate was loaded per lane for SDS-PAGE.

Detection occurred using a 1 : 750 dilution of primary antibody diluted in 5% BLOTTO in PBS overnight at 4°C followed reaction with a 1 : 10,000 dilution of IRDye® 800 conjugated Gt-a-Rabbit IgG (H&L) for 45 min at room temperature (800 nm channel, green).

IRDye® 800 fluorescence image was captured using the Odyssey® Infrared Imaging System developed by LI-COR.

IRDye is a trademark of LI-COR, Inc.

Specification

Product Description	Rabbit polyclonal antibody raised against synthetic peptide of Ppard.
Immunogen	A synthetic peptide corresponding to N-terminus of mouse Ppard.
Host	Rabbit
Reactivity	Chimpanzee, Human, Mouse, Rabbit, Rat
Specificity	This affinity purified antibody is directed against mouse PPAR delta protein. No reactivity is expected against other subtypes of PPAR.
Form	Liquid
Quality Control Testing	Antibody Reactive Against Synthetic Peptide.

Recommend Usage	ELISA (1:600000) Western Blot (1:500-1:5000) The optimal working dilution should be determined by the end user.
Storage Buffer	In 20 mM KH ₂ PO ₄ , 150 mM NaCl, pH 7.2 (0.01% sodium azide)
Storage Instruction	Store at 4°C. For long term storage store at -20°C. Aliquot to avoid repeated freezing and thawing.
Note	This product contains sodium azide: a POISONOUS AND HAZARDOUS SUBSTANCE which should be handled by trained staff only.

Applications

- Western Blot (Tissue lysate)

Immunoblotting of Ppard polyclonal antibody (Cat # PAB11322) is shown to detect a predominant band at ~ 43 kDa corresponding to Ppard present in mouse heart tissue lysates.

Preincubation of the antibody with the immunizing peptide completely blocks reactivity with this band (data not shown). Approximately 30 ug of lysate was loaded per lane for SDS-PAGE.

Detection occurred using a 1 : 750 dilution of primary antibody diluted in 5% BLOTTO in PBS overnight at 4°C followed reaction with a 1 : 10,000 dilution of IRDye® 800 conjugated Gt-a-Rabbit IgG (H&L) for 45 min at room temperature (800 nm channel, green).

IRDye® 800 fluorescence image was captured using the Odyssey® Infrared Imaging System developed by LI-COR.

IRDye is a trademark of LI-COR, Inc.

- Enzyme-linked Immunoabsorbent Assay

Gene Info — Ppard

Entrez GeneID	19015
Protein Accession#	P35396
Gene Name	Ppard
Gene Alias	NUC-1, NUC1, Nr1c2, PPAR-beta, PPAR-delta, PPAR[b], PPARdelta, Pparb, Pparb/d
Gene Description	peroxisome proliferator activator receptor delta
Gene Ontology	Hyperlink
Other Designations	OTTMUSP00000027308 PPARdelta/beta Peroxisome proliferator-activated receptor beta mPPAR(delta)

Publication Reference

- [Medicine. PPARs as therapeutic targets: reverse cardiology?](#)

Plutzky J.

Science 2003 Oct; 302(5644):406.

Application: WB-Tr, Human, Cancers, Mammalian cells

- [Transcriptional repression of atherogenic inflammation: modulation by PPARdelta.](#)

Lee CH, Chawla A, Urbiztondo N, Liao D, Boisvert WA, Evans RM, Curtiss LK.

Science 2003 Oct; 302(5644):453.

- [Progress in cardiovascular biology: PPAR for the course.](#)

Lazar MA.

Nat Med 2001 Jan; 7(1):23.

- [Peroxisome proliferator-activated receptors \(PPARs\): nuclear receptors at the crossroads between lipid metabolism and inflammation.](#)

Chinetti G, Fruchart JC, Staels B.

Inflammation Research 2000 Oct; 49(10):497.