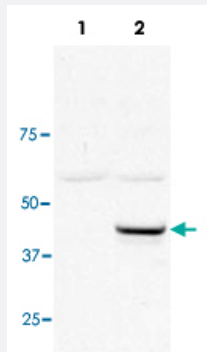


UBE2J1 polyclonal antibody

Catalog # PAB11288 Size 100 ug

Applications



Western Blot (Transfected lysate)

Western blot using UBE2J1 polyclonal antibody (Cat # PAB11288) shows detection of UBE2J1 in 293 cells over-expressing Myc-UBE2J1 (Lane 2). Lane 1 contains lysate from mock-transfected 293 cells. Personal Communication, A. Weissman & T. Shang, CCR-NCI, Frederick, MD.

Specification

Product Description Rabbit polyclonal antibody raised against synthetic peptide of UBE2J1.

Immunogen A synthetic peptide corresponding to N-terminus of human UBE2J1.

Host Rabbit

Reactivity Human, Mouse, Rat

Form Liquid

Quality Control Testing Antibody Reactive Against Synthetic Peptide.

Recommend Usage
ELISA (1:1000-1:5000)
Western Blot (1:200-1:2000)
Immunoprecipitation (1-2 ug)
The optimal working dilution should be determined by the end user.

Storage Buffer In 20 mM KH₂PO₄, 150 mM NaCl, pH 7.2 (0.01% sodium azide)

Storage Instruction
Store at 4°C. For long term storage store at -20°C.
Aliquot to avoid repeated freezing and thawing.

Note

This product contains sodium azide: a POISONOUS AND HAZARDOUS SUBSTANCE which should be handled by trained staff only.

Applications

- Western Blot (Transfected lysate)

Western blot using UBE2J1 polyclonal antibody (Cat # PAB11288) shows detection of UBE2J1 in 293 cells over-expressing Myc-UBE2J1 (Lane 2).

Lane 1 contains lysate from mock-transfected 293 cells.

Personal Communication, A. Weissman & T. Shang, CCR-NCI, Frederick, MD.

- Immunoprecipitation

- Enzyme-linked Immunoabsorbent Assay

Gene Info — UBE2J1

Entrez GeneID [51465](#)

Protein Accession# [NP_057105:Q9Y385](#)

Gene Name UBE2J1

Gene Alias CGI-76, HSPC153, HSPC205, HSU93243, MGC12555, NCUBE1, Ubc6p

Gene Description ubiquitin-conjugating enzyme E2, J1 (UBC6 homolog, yeast)

Gene Ontology [Hyperlink](#)

Gene Summary The modification of proteins with ubiquitin is an important cellular mechanism for targeting abnormal or short-lived proteins for degradation. Ubiquitination involves at least three classes of enzymes: ubiquitin-activating enzymes, or E1s, ubiquitin-conjugating enzymes, or E2s, and ubiquitin-protein ligases, or E3s. This gene encodes a member of the E2 ubiquitin-conjugating enzyme family. This enzyme is located in the membrane of the endoplasmic reticulum (ER) and may contribute to quality control ER-associated degradation by the ubiquitin-proteasome system. [provided by RefSeq]

Other Designations OTTHUMP00000016852|non-canonical ubiquitin conjugating enzyme 1|ubiquitin-conjugating enzyme E2, J1

Publication Reference

- [A role for mammalian Ubc6 homologues in ER-associated protein degradation.](#)

Lenk U, Yu H, Walter J, Gelman MS, Hartmann E, Kopito RR, Sommer T.

Journal of Cell Science 2002 Jul; 115(Pt 14):3007.

- [Ubiquitin and its kin: how close are the family ties?](#)

Jentsch S, Pyrowolakis G.

Trends in Cell Biology 2000 Aug; 10(8):335.

- [Identification of a family of noncanonical ubiquitin-conjugating enzymes structurally related to yeast UBC6.](#)

Lester D, Farquharson C, Russell G, Houston B.

Biochemical and Biophysical Research Communications 2000 Mar; 269(2):474.

Pathway

- [Ubiquitin mediated proteolysis](#)