

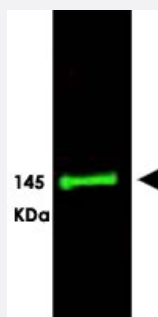
SLIT3 polyclonal antibody

Catalog # PAB11260

Size 100 ug

Applications

Western Blot (Tissue lysate)



Western blot using SLIT3 polyclonal antibody (Cat # PAB11260) shows detection of a predominant band at ~145 KDa corresponding to SLIT3 (arrowhead) in a bovine thyroid tissue lysate using the 800 nm channel (green). Approximately 35 ug of lysate was separated on a 4-8% Tricine gel by SDS-PAGE and transferred onto nitrocellulose.

After blocking the membrane was probed with the primary antibody diluted to 1 : 800.

Incubation was for 2 h at room temperature followed by washes and reaction with a 1 : 10,000 dilution of IRDye™ 800 conjugated Gt-a-RabbitIgG [H&L] MXHu for 45 min at room temperature.

Molecular weight markers were used for size comparison using the 700 nm channel (not shown).

IRDye™ 800 fluorescence image was captured using the Odyssey® Infrared Imaging System developed by LI-COR.

IRDye is a trademark of LI-COR, Inc.

Specification

Product Description

Rabbit polyclonal antibody raised against synthetic peptide of SLIT3.

Immunogen

A synthetic peptide corresponding to amino acids 1164-1177 of human SLIT3.

Host

Rabbit

Reactivity

Bovine, Chicken, Chimpanzee, Dog, Human, Mouse, Rat

Form

Liquid

Quality Control Testing

Antibody Reactive Against Synthetic Peptide.

Recommend Usage	ELISA (1:2000-1:10000) Western Blot (1:500-1:2000) The optimal working dilution should be determined by the end user.
Storage Buffer	In 20 mM KH ₂ PO ₄ , 150 mM NaCl, pH 7.2 (0.01% sodium azide)
Storage Instruction	Store at 4°C. For long term storage store at -20°C. Aliquot to avoid repeated freezing and thawing.
Note	This product contains sodium azide: a POISONOUS AND HAZARDOUS SUBSTANCE which should be handled by trained staff only.

Applications

- Western Blot (Tissue lysate)

Western blot using SLIT3 polyclonal antibody (Cat # PAB11260) shows detection of a predominant band at ~145 KDa corresponding to SLIT3 (arrowhead) in a bovine thyroid tissue lysate using the 800 nm channel (green).

Approximately 35 ug of lysate was separated on a 4-8% Tricine gel by SDS-PAGE and transferred onto nitrocellulose. After blocking the membrane was probed with the primary antibody diluted to 1 : 800.

Incubation was for 2 h at room temperature followed by washes and reaction with a 1 : 10,000 dilution of IRDye™ 800 conjugated Gt-a-Rabbit IgG [H&L] MXHu for 45 min at room temperature.

Molecular weight markers were used for size comparison using the 700 nm channel (not shown).

IRDye™ 800 fluorescence image was captured using the Odyssey® Infrared Imaging System developed by LI-COR.

IRDye is a trademark of LI-COR, Inc.

- Enzyme-linked Immunoabsorbent Assay

Gene Info — SLIT3

Entrez GeneID	6586
Protein Accession#	O75094;NP_003053
Gene Name	SLIT3
Gene Alias	FLJ10764, MEGF5, SLIL2, SLIT1, Slit-3, slit2
Gene Description	slit homolog 3 (Drosophila)
Omim ID	603745
Gene Ontology	Hyperlink
Other Designations	slit homolog 3

Publication Reference

- [Rac1 inhibition via Srgap2 restrains inflammatory osteoclastogenesis and limits the clastokine, SLIT3.](#)

Shin B, Kupferman J, Schmidt E, Polleux F, Delany AM, Lee SK.

Journal of Bone and Mineral Research 2019 Dec; [Epub].

Application: WB, Mouse, Mouse bone marrow monocytes

- [Conserved modularity and potential for alternate splicing in mouse and human Slit genes.](#)

Little M, Rumballe B, Georgas K, Yamada T, Teasdale RD.

The International Journal of Developmental Biology 2002 Jan; 46(4):385.

- [Dual trafficking of Slit3 to mitochondria and cell surface demonstrates novel localization for Slit protein.](#)

Little MH, Wilkinson L, Brown DL, Piper M, Yamada T, Stow JL.

American Journal of Physiology. Cell Physiology 2001 Aug; 281(2):C486.

Application: IEM, IF, WB-Tr, Human, Monkey, Rat, COS-1, HeLa, M15 cells, Rat kidneys

- [Distinct but overlapping expression patterns of two vertebrate slit homologs implies functional roles in CNS development and organogenesis.](#)

Holmes GP, Negus K, Burrige L, Raman S, Algar E, Yamada T, Little MH.

Mechanisms of Development 1998 Dec; 79(1-2):57.

- [Identification of high-molecular-weight proteins with multiple EGF-like motifs by motif-trap screening.](#)

Nakayama M, Nakajima D, Nagase T, Nomura N, Seki N, Ohara O.

Genomics 1998 Jul; 51(1):27.

Pathway

- [Axon guidance](#)

Disease

- [Celiac Disease](#)
- [Genetic Predisposition to Disease](#)
- [Obesity](#)
- [Parkinson disease](#)

- [Schizophrenia](#)
- [Tobacco Use Disorder](#)
- [Uterine Cervical Neoplasms](#)