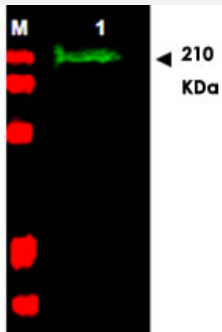


# SLIT2 polyclonal antibody

Catalog # PAB11259      Size 100 ug

## Applications

### Western Blot (Tissue lysate)



Western blot using SLIT2 polyclonal antibody (Cat # PAB11259) shows detection of a band at ~165 KDa (Lane 1) corresponding to SLIT2 present in a chicken spinal cord whole cell lysate (arrowhead).

Approximately 30 ug of lysate was separated on a 4-20% Tris-Glycine gel by SDS-PAGE and transferred onto nitrocellulose.

After blocking the membrane was probed with the primary antibody diluted to 1 : 1,350.

Reaction occurred overnight at 4°C followed by washes and reaction with a 1 : 10,000 dilution of IRDye™800 conjugated Gt-a-Rabbit IgG [H&L] MX for 45 min at room temperature (800 nm channel, green).

Molecular weight estimation was made by comparison to prestained MW markers in lane M (700 nm channel, red).

IRDye™ 800 fluorescence image was captured using the Odyssey® Infrared Imaging System developed by LI-COR.

IRDye is a trademark of LI-COR, Inc.

## Specification

<b>Product Description</b>	Rabbit polyclonal antibody raised against synthetic peptide of SLIT2.
<b>Immunogen</b>	A synthetic peptide corresponding to amino acids 484-500 of human SLIT2.
<b>Host</b>	Rabbit
<b>Reactivity</b>	Bovine, Chicken, Clawed frog, Human, Mouse, Rat
<b>Form</b>	Liquid
<b>Quality Control Testing</b>	Antibody Reactive Against Synthetic Peptide.

<b>Recommend Usage</b>	ELISA (1:1500-1:6000) Western Blot (1:500-1:2000) The optimal working dilution should be determined by the end user.
<b>Storage Buffer</b>	In 20 mM KH <sub>2</sub> PO <sub>4</sub> , 150 mM NaCl, pH 7.2 (0.01% sodium azide)
<b>Storage Instruction</b>	Store at 4°C. For long term storage store at -20°C. Aliquot to avoid repeated freezing and thawing.
<b>Note</b>	This product contains sodium azide: a POISONOUS AND HAZARDOUS SUBSTANCE which should be handled by trained staff only.

## Applications

- Western Blot (Tissue lysate)

Western blot using SLIT2 polyclonal antibody (Cat # PAB11259) shows detection of a band at ~165 KDa (Lane 1) corresponding to SLIT2 present in a chicken spinal cord whole cell lysate (arrowhead). Approximately 30 ug of lysate was separated on a 4-20% Tris-Glycine gel by SDS-PAGE and transferred onto nitrocellulose. After blocking the membrane was probed with the primary antibody diluted to 1 : 1,350. Reaction occurred overnight at 4°C followed by washes and reaction with a 1 : 10,000 dilution of IRDye™800 conjugated Gt-a-Rabbit IgG [H&L] MX for 45 min at room temperature (800 nm channel, green). Molecular weight estimation was made by comparison to prestained MW markers in lane M (700 nm channel, red). IRDye™ 800 fluorescence image was captured using the Odyssey® Infrared Imaging System developed by LI-COR. IRDye is a trademark of LI-COR, Inc.

- Enzyme-linked Immunoabsorbent Assay

## Gene Info — SLIT2

<b>Entrez GeneID</b>	<a href="#">9353</a>
<b>Protein Accession#</b>	<a href="#">O94813;NP_004778</a>
<b>Gene Name</b>	SLIT2
<b>Gene Alias</b>	FLJ14420, SLIL3, Slit-2
<b>Gene Description</b>	slit homolog 2 (Drosophila)
<b>Omim ID</b>	<a href="#">603746</a>
<b>Gene Ontology</b>	<a href="#">Hyperlink</a>
<b>Other Designations</b>	slit homolog 2

## Publication Reference

- [SLIT2-mediated ROBO2 signaling restricts kidney induction to a single site.](#)

Grieshammer U, Le Ma, Plump AS, Wang F, Tessier-Lavigne M, Martin GR.

Developmental Cell 2004 May; 6(5):709.

- [Slit protein-mediated inhibition of CXCR4-induced chemotactic and chemoinvasive signaling pathways in breast cancer cells.](#)

Prasad A, Fernandis AZ, Rao Y, Ganju RK.

The Journal of Biological Chemistry 2004 Mar; 279(10):9115.

- [Frequent epigenetic inactivation of the SLIT2 gene in gliomas.](#)

Dallol A, Krex D, Hesson L, Eng C, Maher ER, Latif F.

Oncogene 2003 Jul; 22(29):4611.

## Pathway

- [Axon guidance](#)

## Disease

- [Cardiovascular Diseases](#)
- [Cerebral Hemorrhage](#)
- [Diabetes Mellitus](#)
- [Edema](#)
- [Genetic Predisposition to Disease](#)
- [Hypertension](#)
- [Intracranial Hemorrhages](#)
- [Stroke](#)
- [Subarachnoid Hemorrhage](#)
- [Tobacco Use Disorder](#)

- [Vesico-Ureteral Reflux](#)