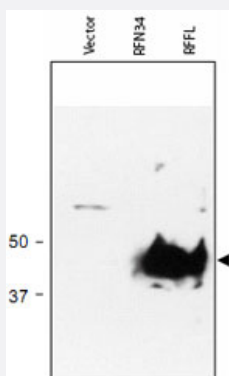


# RFFL polyclonal antibody

Catalog # PAB11254      Size 500 ug

## Applications



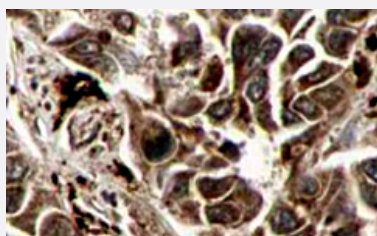
### Western Blot

Western blot using RFFL polyclonal antibody (Cat # PAB11254) shows detection of RFFL (arrowhead) in lysate.

Lanes correspond to empty vector 293T cell lysate (1) ; RNF34 transfected lysate (2) and RFFL transfected lysate (3), are shown using 20 uL of lysate per lane.

The primary antibody diluted to 1:1,000.

Personal Communication, Srinivasa Srinivasula, CCR-NCI, Bethesda, MD.



### Immunohistochemistry (Formalin/PFA-fixed paraffin-embedded sections)

Immunohistochemistry of RFFL polyclonal antibody (Cat # PAB11254) shows strong cytoplasmic and membranous staining of tumor cells in cancerous human liver tissue.

Tissue was formalin-fixed and paraffin embedded.

Brown color indicates presence of protein, blue color shows cell nuclei.

Personal Communication, Kenneth Wester, [www.proteinatlas.org](http://www.proteinatlas.org), Uppsala, Sweden.

## Specification

<b>Product Description</b>	Rabbit polyclonal antibody raised against partial recombinant RFFL.
<b>Immunogen</b>	Recombinant protein corresponding to amino acids 1-363 of human RFFL.
<b>Host</b>	Rabbit
<b>Reactivity</b>	Bovine, Dog, Human, Mouse, Rat

Specificity	This protein A purified antibody is directed against human RFFL protein. Expect reactivity with isoform 1, 2 and 3 of RFFL.
Form	Lyophilized
Quality Control Testing	Antibody Reactive Against Recombinant Protein.
Recommend Usage	ELISA (1:4000-1:20000) Western Blot (1:500-1:3000) Immunohistochemistry (1:500-1:3000) The optimal working dilution should be determined by the end user.
Storage Buffer	Lyophilized from 0.02 M KH <sub>2</sub> PO <sub>4</sub> , 150 mM NaCl, pH 7.2 (0.01% sodium azide).
Storage Instruction	Store at 4°C. For long term storage store at -20°C. Aliquot to avoid repeated freezing and thawing.
Note	This product contains sodium azide: a POISONOUS AND HAZARDOUS SUBSTANCE which should be handled by trained staff only.

## Applications

- Western Blot

Western blot using RFFL polyclonal antibody (Cat # PAB11254) shows detection of RFFL (arrowhead) in lysate.

Lanes correspond to empty vector 293T cell lysate (1) ; RNF34 transfected lysate (2) and RFFL transfected lysate (3), are shown using 20 uL of lysate per lane.

The primary antibody diluted to 1:1,000.

Personal Communication, Srinivasa Srinivasula, CCR-NCI, Bethesda, MD.

- Immunohistochemistry (Formalin/PFA-fixed paraffin-embedded sections)

Immunohistochemistry of RFFL polyclonal antibody (Cat # PAB11254) shows strong cytoplasmic and membranous staining of tumor cells in cancerous human liver tissue.

Tissue was formalin-fixed and paraffin embedded.

Brown color indicates presence of protein, blue color shows cell nuclei.

Personal Communication, Kenneth Wester, [www.proteinatlas.org](http://www.proteinatlas.org), Uppsala, Sweden.

- Enzyme-linked Immunoabsorbent Assay

## Gene Info — RFFL

Entrez GeneID [117584](#)

Protein Accession# [NP\\_476519:Q8WZ73](#)

Gene Name RFFL

Gene Alias	RIFIFYLIN, RNF189, RNF34L
Gene Description	ring finger and FYVE-like domain containing 1
Omim ID	<a href="#">609735</a>
Gene Ontology	<a href="#">Hyperlink</a>
Other Designations	FYVE-RING finger protein SAKURA fring rififylin

## Publication Reference

- [Crystal structure of a FYVE-type zinc finger domain from the caspase regulator CARP2.](#)  
Tibbetts MD, Shiozaki EN, Gu L, McDonald ER 3rd, El-Deiry WS, Shi Y.  
Structure 2004 Dec; 12(12):2257.
- [Over-expression of Rififylin, a new RING finger and FYVE-like domain-containing protein, inhibits recycling from the endocytic recycling compartment.](#)  
Coumailleau F, Das V, Alcover A, Raposo G, Vandormael-Pournin S, Le Bras S, Baldacci P, Dautry-Varsat A, Babinet C, Cohen-Tannoudji M.  
Molecular Biology of the Cell 2004 Oct; 15(10):4444.  
  
Application: WB, Human, HeLa cells
- [Suppression of caspase-8- and -10-associated RING proteins results in sensitization to death ligands and inhibition of tumor cell growth.](#)  
McDonald ER 3rd, El-Deiry WS.  
PNAS 2004 Apr; 101(16):6170.

## Disease

- [Arrhythmias](#)
- [Death](#)
- [Genetic Predisposition to Disease](#)
- [Hematologic Diseases](#)
- [Narcolepsy](#)
- [Occupational Diseases](#)