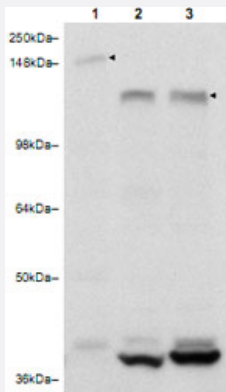


RAB11FIP3 polyclonal antibody

Catalog # PAB11253 Size 100 ug

Applications



Western Blot (Cell lysate)

Western blot using RAB11FIP3 polyclonal antibody (Cat # PAB11253) to detect RAB11FIP3 (arrowhead) in NIH/3T3 cells (lane 1), HeLa cells (lane 2) and 293T cells (lane 3).

The primary antibody at a 1 : 2,000 dilution.

Personal Communication, P. Randazzo, CCR-NCI, Bethesda, MD.

Specification

Product Description	Rabbit polyclonal antibody raised against partial recombinant RAB11FIP3.
Immunogen	Recombinant protein corresponding to C-terminus one-third of human RAB11FIP3.
Host	Rabbit
Reactivity	Human, Mouse, Rat
Form	Liquid
Quality Control Testing	Antibody Reactive Against Recombinant Protein.
Recommend Usage	ELISA (1:1000-1:3000) Western Blot (1:200-1:2000) The optimal working dilution should be determined by the end user.
Storage Buffer	In 20 mM KH ₂ PO ₄ , 150 mM NaCl, pH 7.2 (0.01% sodium azide)
Storage Instruction	Store at 4°C. For long term storage store at -20°C. Aliquot to avoid repeated freezing and thawing.

Note

This product contains sodium azide: a POISONOUS AND HAZARDOUS SUBSTANCE which should be handled by trained staff only.

Applications

- Western Blot (Cell lysate)

Western blot using RAB11FIP3 polyclonal antibody (Cat # PAB11253) to detect RAB11FIP3 (arrowhead) in NIH/3T3 cells (lane 1), HeLa cells (lane 2) and 293T cells (lane 3).

The primary antibody at a 1 : 2,000 dilution.

Personal Communication, P. Randazzo, CCR-NCI, Bethesda, MD.

- Immunohistochemistry

- Enzyme-linked Immunoabsorbent Assay

Gene Info — RAB11FIP3

Entrez GeneID [9727](#)

Protein Accession# [NP_055515.O75154](#)

Gene Name RAB11FIP3

Gene Alias KIAA0665, Rab11-FIP3

Gene Description RAB11 family interacting protein 3 (class II)

Omim ID [608738](#)

Gene Ontology [Hyperlink](#)

Gene Summary Proteins of the large Rab GTPase family (see RAB1A; MIM 179508) have regulatory roles in the formation, targeting, and fusion of intracellular transport vesicles. RAB11FIP3 is one of many proteins that interact with and regulate Rab GTPases (Hales et al., 2001 [PubMed 11495908]).[supplied by OMIM]

Other Designations PAC196A12.1|eferin|rab11-family interacting protein 3

Publication Reference

- [Structural basis for Rab11-dependent membrane recruitment of a family of Rab11-interacting protein 3 \(FIP3\)/Arfophilin-1.](#)

Shiba T, Koga H, Shin HW, Kawasaki M, Kato R, Nakayama K, Wakatsuki S.

PNAS 2006 Oct; 103(42):15416.

- [Rab11-FIP3 and FIP4 interact with Arf6 and the exocyst to control membrane traffic in cytokinesis.](#)

Fielding AB, Schonteich E, Matheson J, Wilson G, Yu X, Hickson GR, Srivastava S, Baldwin SA, Prekeris R, Gould GW.

The EMBO Journal 2005 Oct; 24(19):3389.

Application: IF, WB, Human, Mouse, CHO, HeLa cells, Recombinant protein

- [Identification of a novel Rab11/25 binding domain present in Eferin and Rip proteins.](#)

Prekeris R, Davies JM, Scheller RH.

The Journal of Biological Chemistry 2001 Oct; 276(42):38966.

Pathway

- [Endocytosis](#)