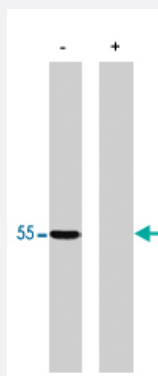


# PPP2R2A polyclonal antibody

Catalog # PAB10418

Size 100 ug

## Applications



### Western Blot (Tissue lysate)

PPP2R2A polyclonal antibody (Cat # PAB10418) in western blot of total rat brain homogenate. (+) indicates presence of specific blocking peptide of control peptide (-).

## Specification

|                         |   |
|-------------------------|---|
| Product Description     | Rabbit polyclonal antibody raised against synthetic peptide of PPP2R2A.   |
| Immunogen               | A synthetic peptide (conjugated with KLH ) corresponding to amino acids 14-27 of PPP2R2A.   |
| Sequence                | FSQVLGAVDDDVAE  |
| Host                    | Rabbit  |
| Reactivity              | Bovine, Human, Mouse, Rat   |
| Form                    | Liquid  |
| Quality Control Testing | Antibody Reactive Against Synthetic Peptide.  |
| Recommend Usage         | Western blot (5 to 10 ug/mL)<br>Immunocytochemistry (5 to 10 ug/mL)<br>The optimal working dilution should be determined by the end user. |
| Storage Buffer          | In PBS (0.08% sodium azide)   |
| Storage Instruction     | Store at -20°C.<br>Aliquot to avoid repeated freezing and thawing.  |

**Note**

This product contains sodium azide: a POISONOUS AND HAZARDOUS SUBSTANCE which should be handled by trained staff only.

## Applications

- Western Blot (Tissue lysate)

PPP2R2A polyclonal antibody (Cat # PAB10418) in western blot of total rat brain homogenate. (+) indicates presence of specific blocking peptide of control peptide (-).

- Immunocytochemistry

## Gene Info — PPP2R2A

Entrez GeneID [5520](#)

Gene Name PPP2R2A

Gene Alias B55-ALPHA, B55A, FLJ26613, MGC52248, PR52A, PR55A

Gene Description protein phosphatase 2 (formerly 2A), regulatory subunit B, alpha isoform

Omim ID [604941](#)

Gene Ontology [Hyperlink](#)

**Gene Summary** The product of this gene belongs to the phosphatase 2 regulatory subunit B family. Protein phosphatase 2 is one of the four major Ser/Thr phosphatases, and it is implicated in the negative control of cell growth and division. It consists of a common heteromeric core enzyme, which is composed of a catalytic subunit and a constant regulatory subunit, that associates with a variety of regulatory subunits. The B regulatory subunit might modulate substrate selectivity and catalytic activity. This gene encodes an alpha isoform of the regulatory subunit B55 subfamily. [provided by RefSeq]

**Other Designations** PP2A, subunit B, B-alpha isoform|PP2A, subunit B, B55-alpha isoform|PP2A, subunit B, PR55-alpha isoform|PP2A, subunit B, R2-alpha isoform|Serine/threonine protein phosphatase 2A, 55 KD A regulatory subunit B, alpha isoform|alpha isoform of regulatory subun

## Pathway

- [Tight junction](#)

## Disease

- [Breast Diseases](#)
- [Breast Neoplasms](#)
- [Disease Progression](#)
- [Disease Susceptibility](#)
- [HIV Infections](#)
- [Precancerous Conditions](#)