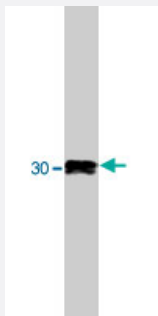


# SR-beta polyclonal antibody

Catalog # PAB10406

Size 250 ug

## Applications



### Western Blot (Cell lysate)

Western blot analysis using SR beta polyclonal antibody (Cat # PAB10406) on 3 (1), 6 (2) and 12 (3) ng of canine microsomal protein.

## Specification

**Product Description** Sheep polyclonal antibody raised against synthetic peptide of SR beta.

**Immunogen** A synthetic peptide corresponding to amino acids 246-265 of SR beta.

**Host** Sheep

**Reactivity** Dog

**Form** Liquid

**Quality Control Testing** Antibody Reactive Against Synthetic Peptide.

**Recommend Usage** Western blot (1 to 5 mg/mL)  
The optimal working dilution should be determined by the end user.

**Storage Buffer** In PBS (0.08% sodium azide)

**Storage Instruction** Store at -20°C.  
Aliquot to avoid repeated freezing and thawing.

**Note** This product contains sodium azide: a POISONOUS AND HAZARDOUS SUBSTANCE which should be handled by trained staff only.

## Applications

- Western Blot (Cell lysate)

Western blot analysis using SR beta polyclonal antibody (Cat # PAB10406) on 3 (1), 6 (2) and 12 (3) ng of canine microsomal protein.

- Immunoprecipitation

## Publication Reference

- [The ribosome regulates the GTPase of the beta-subunit of the signal recognition particle receptor.](#)

Bacher G, Pool M, Dobberstein B.

The Journal of Cell Biology 1999 Aug; 146(4):723.

Application: WB, SR liposomes

- [A functional GTPase domain, but not its transmembrane domain, is required for function of the SRP receptor beta-subunit.](#)

Ogg SC, Barz WP, Walter P.

Journal of Cellular Biology 1998 Jul; 142(2):341.

Application: WB, Yeast, Yeast cells

- [An amino-terminal domain containing hydrophobic and hydrophilic sequences binds the signal recognition particle receptor alpha subunit to the beta subunit on the endoplasmic reticulum membrane.](#)

Young JC, Ursini J, Legate KR, Miller JD, Walter P, Andrews DW.

The Journal of Biological Chemistry 1995 Jun; 270(26):15650.

Application: WB-Ce, WB-Re, Dog, Canine pancreatic rough microsomes, Recombinant protein