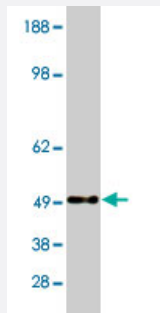


ROBO1 polyclonal antibody

Catalog # PAB10401 Size 100 ug

Applications



Western Blot (Tissue lysate)

Western blot using ROBO1 polyclonal antibody (Cat # PAB10401) on human brain lysate. Lysate used at 15 ug/lane. Antibody used at 10 ug/mL .

Specification

Product Description	Rabbit polyclonal antibody raised against synthetic peptide of ROBO1.
Immunogen	A synthetic peptide corresponding to human ROBO1.
Host	Rabbit
Reactivity	Human
Form	Liquid
Quality Control Testing	Antibody Reactive Against Synthetic Peptide.
Recommend Usage	Western blot (1 to 5 mg/mL) The optimal working dilution should be determined by the end user.
Storage Buffer	In PBS (0.08% sodium azide)
Storage Instruction	Store at -20°C. Aliquot to avoid repeated freezing and thawing.
Note	This product contains sodium azide: a POISONOUS AND HAZARDOUS SUBSTANCE which should be handled by trained staff only.

Applications

- Western Blot (Tissue lysate)

Western blot using ROBO1 polyclonal antibody (Cat # PAB10401) on human brain lysate. Lysate used at 15 ug/lane. Antibody used at 10 ug/mL .

- Western Blot

Gene Info — ROBO1

Entrez GeneID [6091](#)

Gene Name ROBO1

Gene Alias DUTT1, FLJ21882, MGC131599, MGC133277, SAX3

Gene Description roundabout, axon guidance receptor, homolog 1 (Drosophila)

Omim ID [602430](#)

Gene Ontology [Hyperlink](#)

Gene Summary Bilateral symmetric nervous systems have special midline structures that establish a partition between the two mirror image halves. Some axons project toward and across the midline in response to long-range chemoattractants emanating from the midline. The product of this gene is a member of the immunoglobulin gene superfamily and encodes an integral membrane protein that functions in axon guidance and neuronal precursor cell migration. This receptor is activated by SLIT-family proteins, resulting in a repulsive effect on glioma cell guidance in the developing brain. A related gene is located at an adjacent region on chromosome 3. Multiple transcript variants encoding different isoforms have been found for this gene. [provided by RefSeq]

Other Designations axon guidance receptor|roundabout 1

Publication Reference

- [Tumour specific promoter region methylation of the human homologue of the Drosophila Roundabout gene DUTT1 \(ROBO1\) in human cancers.](#)

Dallol A, Forgacs E, Martinez A, Sekido Y, Walker R, Kishida T, Rabbitts P, Maher ER, Minna JD, Latif F.

Oncogene 2002 May; 21(19):3020.

- [Slit proteins bind Robo receptors and have an evolutionarily conserved role in repulsive axon guidance.](#)

Brose K, Bland KS, Wang KH, Arnott D, Henzel W, Goodman CS, Tessier-Lavigne M, Kidd T.

Cell 1999 Mar; 96(6):795.

Pathway

- [Axon guidance](#)

Disease

- [Asthma](#)
- [Genetic Predisposition to Disease](#)
- [Obesity](#)
- [Schizophrenia](#)
- [Tobacco Use Disorder](#)