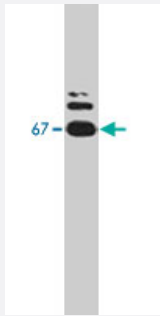


SMSr polyclonal antibody

Catalog # PAB10385 Size 100 ug

Applications



Western Blot (Recombinant protein)

Detection of 20 ng/lane recombinant SMSr using SMSr polyclonal antibody (Cat # PAB10385, 1.25 ug/mL).

Specification

Product Description	Rabbit polyclonal antibody raised against synthetic peptide of SMSr.
Immunogen	Recombinant protein corresponding to Drosophila SMSr.
Host	Rabbit
Reactivity	Fruit fly
Form	Liquid
Quality Control Testing	Antibody Reactive Against Recombinant Protein.
Recommend Usage	The optimal working dilution should be determined by the end user.
Storage Buffer	In PBS (0.08% sodium azide)
Storage Instruction	Store at -20°C. Aliquot to avoid repeated freezing and thawing.
Note	This product contains sodium azide: a POISONOUS AND HAZARDOUS SUBSTANCE which should be handled by trained staff only.

Applications

- Western Blot (Recombinant protein)

Detection of 20 ng/lane recombinant SMSr using SMSr polyclonal antibody (Cat # PAB10385, 1.25 ug/mL).

Gene Info — SMSr

Entrez GeneID [38823](#)

Gene Name SMSr

Gene Alias CG32380, CG8572, CG8576, Css3beta

Gene Description SMSr

Gene Ontology [Hyperlink](#)

Gene Summary isoform A|SMSr CG32380-PB

Other Designations SMSr CG32380-PA, isoform A|SMSr CG32380-PB, isoform B

Publication Reference

- [When do Lassus \(longevity assurance genes\) become CerS \(ceramide synthases\)? Insights into the regulation of ceramide synthesis.](#)

Pewzner-Jung Y, Ben-Dor S, Futerman AH.

The Journal of Biological Chemistry 2006 Sep; 281(35):25001.

- [Sphingolipid functions in Saccharomyces cerevisiae: comparison to mammals.](#)

Dickson RC.

Annual Review of Biochemistry 1998 Jul; 67:27.

- [Subcellular localization and membrane topology of serine palmitoyltransferase, 3-dehydrosphinganine reductase, and sphinganine N-acyltransferase in mouse liver.](#)

Mandon EC, Ehses I, Rother J, van Echten G, Sandhoff K.

The Journal of Biological Chemistry 1992 Jun; 267(16):11144.