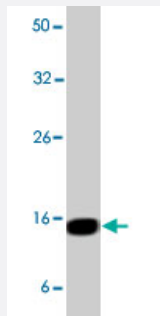


# SH2D1A polyclonal antibody

Catalog # PAB10367      Size 100 ug

## Applications



### Western Blot (Cell lysate)

Western blot analysis using SH2D1A polyclonal antibody (Cat # PAB10367) on NK-92 cell lysate at 10 ug/mL).

## Specification

<b>Product Description</b>	Rabbit polyclonal antibody raised against full length recombinant SH2D1A.
<b>Immunogen</b>	Recombinant protein corresponding to full length SH2D1A.
<b>Host</b>	Rabbit
<b>Reactivity</b>	Human
<b>Form</b>	Liquid
<b>Quality Control Testing</b>	Antibody Reactive Against Recombinant Protein.
<b>Recommend Usage</b>	Western blot (5 to 10 ug/mL) The optimal working dilution should be determined by the end user.
<b>Storage Buffer</b>	In PBS (0.08% sodium azide)
<b>Storage Instruction</b>	Store at -20°C. Aliquot to avoid repeated freezing and thawing.
<b>Note</b>	This product contains sodium azide: a POISONOUS AND HAZARDOUS SUBSTANCE which should be handled by trained staff only.

## Applications

- Western Blot (Cell lysate)

Western blot analysis using SH2D1A polyclonal antibody (Cat # PAB10367) on NK-92 cell lysate at 10 ug/mL).

- Immunoprecipitation

## Gene Info — SH2D1A

Entrez GeneID	<a href="#">4068</a>
Gene Name	SH2D1A
Gene Alias	DSHP, EBVS, FLJ18687, FLJ92177, IMD5, LYP, MTCP1, SAP, XLP, XLPD
Gene Description	SH2 domain protein 1A
Omim ID	<a href="#">300490</a> <a href="#">308240</a>
Gene Ontology	<a href="#">Hyperlink</a>
Gene Summary	<p>This gene encodes a protein that plays a major role in the bidirectional stimulation of T and B cells . This protein contains an SH2 domain and a short tail. It associates with the signaling lymphocyte -activation molecule, thereby acting as an inhibitor of this transmembrane protein by blocking the recruitment of the SH2-domain-containing signal-transduction molecule SHP-2 to its docking site. This protein can also bind to other related surface molecules that are expressed on activated T, B and NK cells, thereby modifying signal transduction pathways in these cells. Mutations in this gene cause lymphoproliferative syndrome X-linked type 1 or Duncan disease, a rare immunodeficiency characterized by extreme susceptibility to infection with Epstein-Barr virus, with symptoms including severe mononucleosis and malignant lymphoma. Multiple transcript variants encoding different isoforms have been found for this gene. [provided by RefSeq</p>
Other Designations	Duncan's disease OTTHUMP00000023976 SLAM-associated protein T cell signal transduction molecule SAP signaling lymphocyte activation molecule-associated protein

## Publication Reference

- [Regulation of SLAM-mediated signal transduction by SAP, the X-linked lymphoproliferative gene product.](#)

Latour S, Gish G, Helgason CD, Humphries RK, Pawson T, Veillette A.

Nature Immunology 2001 Aug; 49(4):189.

Application: WB, Mouse, BI-141 cells, Mouse thymocytes

- [Altered lymphocyte responses and cytokine production in mice deficient in the X-linked lymphoproliferative disease gene SH2D1A/DSHP/SAP.](#)

Czar MJ, Kersh EN, Mijares LA, Lanier G, Lewis J, Yap G, Chen A, Sher A, Duckett CS, Ahmed R, Schwartzberg PL.  
PNAS 2001 Jun; 98(13):7449.

- [The X-linked lymphoproliferative-disease gene product SAP regulates signals induced through the co-receptor SLAM.](#)

Sayos J, Wu C, Morra M, Wang N, Zhang X, Allen D, van Schaik S, Notarangelo L, Geha R, Roncarolo MG, Oettgen H, De Vries JE, Aversa G, Terhorst C.

Nature 1998 Oct; 395(6701):462.

Application: IP, WB-Ce, WB-Tr, Human, Monkey, Jurkat, COS-7 cells, Peripheral blood lymphocytes

## Pathway

- [Natural killer cell mediated cytotoxicity](#)

## Disease

- [Common Variable Immunodeficiency](#)
- [Epstein-Barr Virus Infections](#)
- [Genetic Predisposition to Disease](#)
- [Immunologic Deficiency Syndromes](#)
- [Infectious Mononucleosis](#)
- [Lymphoma](#)
- [Lymphoproliferative Disorders](#)
- [Severe Combined Immunodeficiency](#)