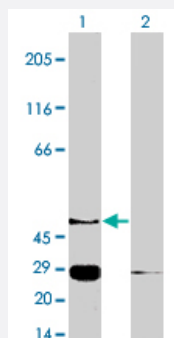


# S1PR4 polyclonal antibody

Catalog # PAB10364

Size 100 ug

## Applications



### Western Blot (Transfected lysate)

Western blot analysis using S1PR4 polyclonal antibody (Cat # PAB10364) on McA-RH7777 cells transfected with S1PR4 protein in the presence (lane 1) and absence (lane 2) of specific blocking peptide.

## Specification

**Product Description** Rabbit polyclonal antibody raised against synthetic peptide of S1PR4.

**Immunogen** A synthetic peptide corresponding to C-terminus of S1PR4.

**Host** Rabbit

**Reactivity** Human

**Form** Liquid

**Quality Control Testing** Antibody Reactive Against Synthetic Peptide.

**Recommend Usage** Western blot (5 to 10 ug/mL)  
The optimal working dilution should be determined by the end user.

**Storage Buffer** In PBS (0.08% sodium azide)

**Storage Instruction** Store at -20°C.  
Aliquot to avoid repeated freezing and thawing.

**Note** This product contains sodium azide: a POISONOUS AND HAZARDOUS SUBSTANCE which should be handled by trained staff only.

## Applications

- Western Blot (Transfected lysate)

Western blot analysis using S1PR4 polyclonal antibody (Cat # PAB10364) on McA-RH7777 cells transfected with S1PR4 protein in the presence (lane 1) and absence (lane 2) of specific blocking peptide.

## Gene Info — S1PR4

Entrez GeneID	<a href="#">8698</a>
Gene Name	S1PR4
Gene Alias	EDG6, LPC1, S1P4, SLP4
Gene Description	sphingosine-1-phosphate receptor 4
Omim ID	<a href="#">603751</a>
Gene Ontology	<a href="#">Hyperlink</a>
Gene Summary	This gene is a member of the endothelial differentiation, G-protein-coupled (EDG)) receptor gene family. EDG receptors bind lysophospholipids or lysosphingolipids as ligands, and are involved in cell signalling in many different cell types. This EDG receptor gene is intronless and is specifically expressed in the lymphoid tissue. [provided by RefSeq]
Other Designations	Sphingosine 1-phosphate receptor 4 Sphingosine 1-phosphate receptor Edg-6 endothelial differentiation, G protein coupled receptor 6 endothelial differentiation, G-protein-coupled receptor 6 endothelial differentiation, lysophosphatidic acid G-protein-coupled receptor 6

## Publication Reference

- [Subtype-specific, differential activities of the EDG family receptors for sphingosine-1-phosphate, a novel lysophospholipid mediator.](#)

Takuwa Y, Okamoto H, Takuwa N, Gonda K, Sugimoto N, Sakurada S.

Molecular and Cellular Endocrinology 2001 May; 177(1-2):3.

Application: IHC, WB, Human, Lymphoid tissues

- [Sphingosine-1-phosphate is a ligand for the G protein-coupled receptor EDG-6.](#)

Van Brocklyn JR, Graler MH, Bernhardt G, Hobson JP, Lipp M, Spiegel S.

Blood 2000 Apr; 95(8):2624.

- [Edg-6 as a putative sphingosine 1-phosphate receptor coupling to Ca\(2+\) signaling pathway.](#)

Yamazaki Y, Kon J, Sato K, Tomura H, Sato M, Yoneya T, Okazaki H, Okajima F, Ohta H.

Biochemical and Biophysical Research Communications 2000 Feb; 268(2):583.

## Pathway

- [Neuroactive ligand-receptor interaction](#)