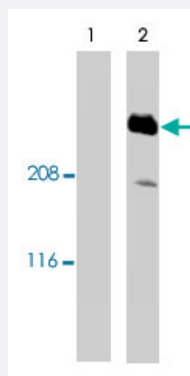


SSeCKS polyclonal antibody

Catalog # PAB10358

Size 250 ug

Applications



Western Blot (Tissue lysate)

Western blotting total cellular protein from cultured rat aortic smooth muscle cells was prepared and analyzed. The protein was probed with 5 ug/mL of pre-immune serum (Lane 1) and 5 ug of SSeCKS polyclonal antibody (Cat # PAB10358, lane 2). The blot was then washed and probed with monoclonal anti-sheep IgG coupled to HRP 1:10,000, and detected with luminol.

Specification

Product Description	Sheep polyclonal antibody raised against partial recombinant SSeCKS.
Immunogen	Recombinant protein corresponding to amino acids 620-1596 of SSeCKS.
Host	Sheep
Reactivity	Bovine, Rat
Form	Liquid
Quality Control Testing	Antibody Reactive Against Recombinant Protein.
Recommend Usage	Western blot (2 to 5 ug/mL) The optimal working dilution should be determined by the end user.
Storage Buffer	In PBS (0.08% sodium azide)
Storage Instruction	Store at -20°C. Aliquot to avoid repeated freezing and thawing.
Note	This product contains sodium azide: a POISONOUS AND HAZARDOUS SUBSTANCE which should be handled by trained staff only.

Applications

- Western Blot (Tissue lysate)

Western blotting total cellular protein from cultured rat aortic smooth muscle cells was prepared and analyzed. The protein was probed with 5 ug/mL of pre-immune serum (Lane 1) and 5 ug of SSeCKS polyclonal antibody (Cat # PAB10358, lane 2). The blot was then washed and probed with monoclonal anti-sheep IgG coupled to HRP 1:10,000, and detected with luminol.

- Immunohistochemistry

- Immunoprecipitation

Publication Reference

- [SSeCKS immunolabeling in rat primary sensory neurons.](#)

Siegel SM, Grove BD, Carr PA.

Brain Research 2002 Feb; 926(1-2):126.

Application: IHC-Fr, WB-Ce, WB-Re, Rat, PC-12 cells, Rat primary sensory neurons, Recombinant protein

- [Involvement of the protein kinase C substrate, SSeCKS, in the actin-based stellate morphology of mesangial cells.](#)

Nelson PJ, Moissoglu K, Vargas J Jr, Klotman PE, Gelman IH.

Journal of Cell Science 1999 Feb; 112 (Pt 3):361.

Application: IF, IP, IHC-Fr, WB-Ce, WB-Tr, Human, Rat, Human mesangial cells, Kidney, Rat-6 lysates

- [A novel src- and ras-suppressed protein kinase C substrate associated with cytoskeletal architecture.](#)

Lin X, Tomblar E, Nelson PJ, Ross M, Gelman IH.

The Journal of Biological Chemistry 1996 Nov; 271(45):28430.

Application: IF, IP, WB-Ce, WB-Re, WB-Tr, Rat, Rat-6 cells, Recombinant protein