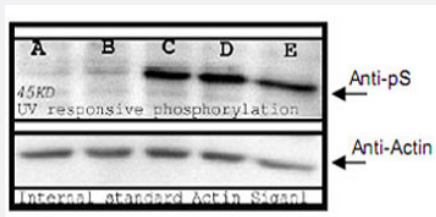


Phosphoserine polyclonal antibody

Catalog # PAB10351 Size 100 ug

Applications

Western Blot (Tissue lysate)



Phospho Serine polyclonal antibody (Cat # PAB10351) is shown to detect phosphorylated proteins present in UV-treated mouse spleen cell lysates (top panel).

Specification

Product Description	Rabbit polyclonal antibody raised against Phosphoserine.
Immunogen	Phosphoserine conjugated with KLH.
Host	Rabbit
Specificity	Reactivity is specific to phosphoserine and minimal cross-reactivity is observed against phosphotyrosine or phosphothreonine.
Form	Liquid
Quality Control Testing	Antibody Reactive Against PhosphoSerine.
Recommend Usage	ELISA (1:1000-1:2500) Western Blot (1:500-1:1000) Immunoprecipitation (10 ug/mg protein sample) The optimal working dilution should be determined by the end user.
Storage Buffer	In 20 mM KH ₂ PO ₄ , 150 mM NaCl, pH 7.2
Storage Instruction	Store at 4°C. For long term storage store at -20°C. Aliquot to avoid repeated freezing and thawing.

Applications

- Western Blot (Tissue lysate)

Phospho Serine polyclonal antibody (Cat # PAB10351) is shown to detect phosphorylated proteins present in UV-treated mouse spleen cell lysates (top panel).

- Immunohistochemistry
- Immunoprecipitation
- Enzyme-linked Immunoabsorbent Assay