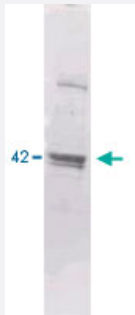


MBP polyclonal antibody

Catalog # PAB10344 Size 1 mg

Applications

Western Blot (Recombinant protein)



MBP polyclonal antibody (Cat # PAB10344) detects MBP-tagged recombinant proteins by western blot.

MBP epitope tag polyclonal antibody at 0.5-1.0 ug/mL was used to detect 1.0 ug of recombinant protein containing the MBP epitope tag.

A 4-20% gradient gel was used to separate the protein by SDS-PAGE.

The protein was transferred to nitrocellulose using standard methods.

After blocking the membrane was probed with the primary antibody for 1 h at room temperature followed by washes and reaction with a 1 : 2500 dilution of IRDye™800 conjugated Gt-a-Rabbit IgG [H&L] for 30 min at room temperature. LICOR's Odyssey® Infrared Imaging System was used to scan and process the image.

Specification

Product Description	Rabbit polyclonal antibody raised against recombinant MBP (Maltose Binding Protein).
Immunogen	Recombinant protein corresponding to MBP (Maltose Binding Protein).
Host	Rabbit
Specificity	This polyclonal anti-MBP epitope tag antibody detects over-expressed proteins containing the MBP epitope tag.
Form	Lyophilized
Isotype	IgG
Quality Control Testing	Antibody Reactive Against Recombinant Protein.

Recommend Usage	ELISA (1:4000-1:16000) Western Blot (1:3500) The optimal working dilution should be determined by the end user.
Storage Buffer	Lyophilized from 20 mM potassium phosphate buffer, 150 mM NaCl, pH 7.2 (0.01% sodium azide)
Storage Instruction	Store at 4°C. For long term storage store at -20°C. Aliquot to avoid repeated freezing and thawing.
Note	This product contains sodium azide: a POISONOUS AND HAZARDOUS SUBSTANCE which should be handled by trained staff only.

Applications

- Western Blot (Recombinant protein)

MBP polyclonal antibody (Cat # PAB10344) detects MBP-tagged recombinant proteins by western blot.

MBP epitope tag polyclonal antibody at 0.5-1.0 ug/mL was used to detect 1.0 ug of recombinant protein containing the MBP epitope tag.

A 4-20% gradient gel was used to separate the protein by SDS-PAGE.

The protein was transferred to nitrocellulose using standard methods.

After blocking the membrane was probed with the primary antibody for 1 h at room temperature followed by washes and reaction with a 1 : 2500 dilution of IRDye™800 conjugated Gt-a-Rabbit IgG [H&L] for 30 min at room temperature.

LICOR's Odyssey® Infrared Imaging System was used to scan and process the image.

- Enzyme-linked Immunoabsorbent Assay

Publication Reference

- [Design of peptides as inhibitors of human papillomavirus 16 transcriptional regulator E1-E2.](#)

Kantang W, Chunsrivirod S, Muangsin N, Poovorawan Y, Krusong K.

Chemical Biology & Drug Design 2016 Jun; 88(4):475.

Application: ELISA, WB, Recombinant protein