

HA tag polyclonal antibody

Catalog # PAB10343

Size 100 ug

Applications

Western Blot (Recombinant protein)



HA tag polyclonal antibody (Cat # PAB10343) detects HA-tagged recombinant proteins by western blot.

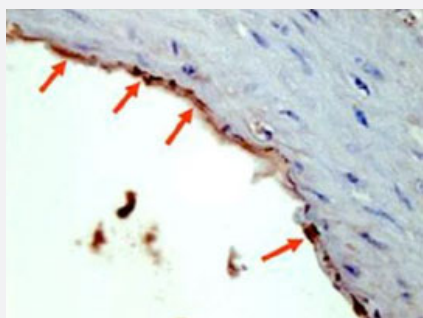
HA-tag polyclonal antibody at a 1 : 2,000 dilution, was used to detect 1.0 ug of 12-Epitope Tag Protein Marker Lysate containing the HA epitope tag.

A 4-20% gradient gel was used to resolve the protein by SDS-PAGE.

The lysate was transferred to nitrocellulose using standard methods.

After blocking, the membrane was probed with HA-tag polyclonal antibody for 1 h at room temperature followed by washes and reaction with a 1 : 20,000 dilution of IRDye™ 800 conjugated Gt-a-Rabbit IgG (H&L) MX10 for 30 min at room temperature.

LICOR's Odyssey® Infrared Imaging System was used to scan and process the image.



Immunohistochemistry (Formalin/PFA-fixed paraffin-embedded sections)

Immunohistochemical staining on formalin fixed paraffin embedded mouse aorta tissue with HA tag polyclonal antibody (Cat # PAB10343) at 1 : 2000 dilution.

Specification

Product Description	Rabbit polyclonal antibody raised against synthetic peptides of HA (Hemagglutinin) tag.
Immunogen	A synthetic peptide (conjugated with KLH) corresponding to YPYDVPDYA of HA Tag.
Host	Rabbit

Specificity	This polyclonal anti-HA tag antibody detects over-expressed proteins containing the HA epitope tag. In western blotting of bacterial extracts, This antibody does not cross-react with endogenous proteins .
Form	Liquid
Quality Control Testing	Antibody Reactive Against Synthetic Peptide.
Recommend Usage	ELISA (1:20000-1:150000) Western Blot (1:2000-1:10000) Immunohistochemistry (1:500-1:2000) The optimal working dilution should be determined by the end user.
Storage Buffer	In 20 mM potassium phosphate buffer, 150 mM NaCl, pH 7.2 (0.01% sodium azide)
Storage Instruction	Store at 4°C. For long term storage store at -20°C. Aliquot to avoid repeated freezing and thawing.
Note	This product contains sodium azide: a POISONOUS AND HAZARDOUS SUBSTANCE which should be handled by trained staff only.

Applications

- Western Blot (Recombinant protein)

HA tag polyclonal antibody (Cat # PAB10343) detects HA-tagged recombinant proteins by western blot.

HA-tag polyclonal antibody at a 1 : 2,000 dilution, was used to detect 1.0 ug of 12-Epitope Tag Protein Marker Lysate containing the HA epitope tag.

A 4-20% gradient gel was used to resolve the protein by SDS-PAGE.

The lysate was transferred to nitrocellulose using standard methods.

After blocking, the membrane was probed with HA-tag polyclonal antibody for 1 h at room temperature followed by washes and reaction with a 1 : 20,000 dilution of IRDye™ 800 conjugated Gt-a-Rabbit IgG (H&L) MX10 for 30 min at room temperature.

LICOR's Odyssey® Infrared Imaging System was used to scan and process the image.

- Immunohistochemistry (Formalin/PFA-fixed paraffin-embedded sections)

Immunohistochemical staining on formalin fixed paraffin embedded mouse aorta tissue with HA tag polyclonal antibody (Cat # PAB10343) at 1 : 2000 dilution.

- Enzyme-linked Immunoabsorbent Assay

Publication Reference

- [Dephosphorylation of NFAT by Calcineurin inhibits Skp2-mediated degradation.](#)

Shunsuke Hanaki, Makoto Habara, Yuki Sato, Haruki Tomiyasu, Yosei Miki, Shusaku Shibutani, Midori Shimada.

Journal of Biochemistry 2023 Nov; [Epub]:0.

Application: WB, Human, HEK293 cells

- [Dephosphorylation of the EGFR protein by calcineurin at serine 1046/1047 enhances its stability.](#)

Takahiro Masaki, Makoto Habara, Shusaku Shibutani, Shunsuke Hanaki, Yuki Sato, Haruki Tomiyasu, Midori Shimada.

Biochemical and Biophysical Research Communications 2023 Jan; 641:84.

Application: IP, Human, HEK 293 cells

- [Purification of a RAS-responsive adenylyl cyclase complex from *Saccharomyces cerevisiae* by use of an epitope addition method.](#)

Field J, Nikawa J, Broek D, MacDonald B, Rodgers L, Wilson IA, Lerner RA, Wigler M.

Molecular and Cellular Biology 1988 May; 8(5):2159.

Application: AFC, IP, WB-Re, Recombinant proteins