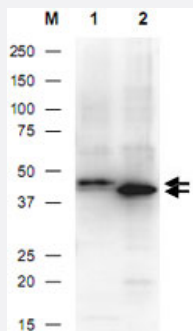


His tag polyclonal antibody

Catalog # PAB10339 Size 100 ug

Applications

Western Blot (Recombinant protein)



His tag polyclonal antibody (Cat # PAB10339) detects His-tagged recombinant proteins by western blot.

The blot was blocked with 3% BSA in TBST for 45 min at RT.

Antibody was incubated with blot at a 1 : 1,000 dilution in TBST with 3% BSA for 1 hour at RT.

Detection occurred using HRP Gt-a-Rabbit IgG diluted 1 : 80,000 in blocking buffer for 30 min at RT.

Lane 1 was loaded with 12-Epitope Tag Protein Marker Lysate which has the His epitope tag incorporated through a C-terminal linkage (~ 42 KDa).

Lane 2 was loaded with His-SUMO-GFP recombinant protein which has the His epitope tag incorporated through an N-terminal linkage (~ 40 KDa).

A 4-20% gradient gel was used to resolve the protein by SDS-PAGE.

Proteins were transferred to nitrocellulose using standard methods.

Molecular weights were estimated by comparison to standards (Lane M).

Specification

Product Description	Rabbit polyclonal antibody raised against synthetic peptides of His tag.
Immunogen	A synthetic peptide (conjugated with KLH) corresponding to His tag.
Sequence	HHHHHH
Host	Rabbit
Specificity	In western blotting of bacterial extracts, This antibody does not cross-react with endogenous proteins.
Form	Liquid
Quality Control Testing	Antibody Reactive Against Synthetic Peptide.

Recommend Usage	ELISA (1:10000-1:40000) Western Blot (1:1000-1:3000) Immunohistochemistry (1:500-1:2000) The optimal working dilution should be determined by the end user.
Storage Buffer	In 20 mM potassium phosphate buffer, 150 mM NaCl, pH 7.2 (0.01% sodium azide)
Storage Instruction	Store at 4°C. For long term storage store at -20°C. Aliquot to avoid repeated freezing and thawing.
Note	This product contains sodium azide: a POISONOUS AND HAZARDOUS SUBSTANCE which should be handled by trained staff only.

Applications

- Western Blot (Recombinant protein)

His tag polyclonal antibody (Cat # PAB10339) detects His-tagged recombinant proteins by western blot.

The blot was blocked with 3% BSA in TBST for 45 min at RT.

Antibody was incubated with blot at a 1 : 1,000 dilution in TBST with 3% BSA for 1 hour at RT.

Detection occurred using HRP Gt-a-Rabbit IgG diluted 1 : 80,000 in blocking buffer for 30 min at RT.

Lane 1 was loaded with 12-Epitope Tag Protein Marker Lysate which has the His epitope tag incorporated through a C-terminal linkage (~ 42 KDa).

Lane 2 was loaded with His-SUMO-GFP recombinant protein which has the His epitope tag incorporated through an N-terminal linkage (~ 40 KDa).

A 4-20% gradient gel was used to resolve the protein by SDS-PAGE.

Proteins were transferred to nitrocellulose using standard methods.

Molecular weights were estimated by comparison to standards (Lane M).

- Immunohistochemistry

- Enzyme-linked Immunoabsorbent Assay