

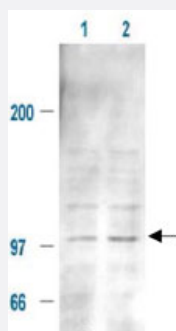
Mdm2 (phospho S185) polyclonal antibody

Catalog # PAB10334

Size 100 ug

Applications

Western Blot (Cell lysate)



Immunoblotting of Mdm2 (phospho S185) polyclonal antibody (Cat # PAB10334) is shown to detect a 102 kDa band (arrow) corresponding to phosphorylated mouse Mdm2 present in a 293T whole cell lysate. Cells were serum-starved for 24 hours prior to harvest. Approximately 20 ug of lysate was loaded per lane for SDS-PAGE. Untreated cells are shown in lane 1, whereas cells in lane 2 were treated with IGF-1 (100 ng/mL) for 20 min prior to harvest. Follow reaction of antibody with a 1 : 2000 dilution of HRP Goat-a-Rabbit IgG for visualization.

Specification

Product Description	Rabbit polyclonal antibody raised against synthetic phosphopeptide of Mdm2.
Immunogen	Synthetic phosphopeptide corresponding to residues surrounding S185 of mouse Mdm2.
Host	Rabbit
Reactivity	Mouse
Specificity	Reactivity occurs against Mouse MDM2 pS185 protein and This antibody is specific to the phosphorylated form of the protein. Reactivity with non-phosphorylated mouse MDM2 is minimal by ELISA and western blot.
Form	Liquid
Quality Control Testing	Antibody Reactive Against Synthetic Peptide.
Recommend Usage	ELISA (1:3000-1:12000) Western Blot (1:500-1:2000) The optimal working dilution should be determined by the end user.

Storage Buffer	In 20 mM KH ₂ PO ₄ , 150 mM NaCl, pH 7.2 (0.01% sodium azide)
Storage Instruction	Store at 4°C. For long term storage store at -20°C. Aliquot to avoid repeated freezing and thawing.
Note	This product contains sodium azide: a POISONOUS AND HAZARDOUS SUBSTANCE which should be handled by trained staff only.

Applications

- Western Blot (Cell lysate)

Immunoblotting of Mdm2 (phospho S185) polyclonal antibody (Cat # PAB10334) is shown to detect a 102 kDa band (arrow) corresponding to phosphorylated mouse Mdm2 present in a 293T whole cell lysate.

Cells were serum-starved for 24 hours prior to harvest.

Approximately 20 ug of lysate was loaded per lane for SDS-PAGE.

Untreated cells are shown in lane 1, whereas cells in lane 2 were treated with IGF-1 (100 ng/mL) for 20 min prior to harvest.

Follow reaction of antibody with a 1 : 2000 dilution of HRP Goat-a-Rabbit IgG for visualization.

- Immunoprecipitation

- Enzyme-linked Immunoabsorbent Assay

Gene Info — Mdm2

Entrez GeneID	17246
Protein Accession#	P23804
Gene Name	Mdm2
Gene Alias	1700007J15Rik, AA415488, Mdm-2
Gene Description	transformed mouse 3T3 cell double minute 2
Gene Ontology	Hyperlink
Other Designations	OTTMUSP00000022916

Publication Reference

- [Repression of the Arf tumor suppressor by E2F3 is required for normal cell cycle kinetics.](#)

Aslanian A, Iaquinta PJ, Verona R, Lees JA.

Genes & Development 2004 Jun; 18(12):1413.

- [High-affinity binding of tumor-suppressor protein p53 and HMGB1 to hemicatenated DNA loops.](#)

Stros M, Muselíková-Polanská E, Pospíšilová S, Strauss F.

Biochemistry 2004 Jun; 43(22):7215.

- [Constitutive and DNA damage inducible activation of pig3 and MDM2 genes by tumor-derived p53 mutant C277Y.](#)

Pospisilova S, Siligan C, Ban J, Jug G, Kovar H.

Molecular Cancer Research 2004 May; 2(5):296.