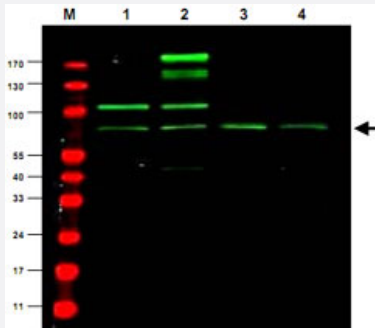


Rreb1 polyclonal antibody

Catalog # PAB10322 Size 500 ug

Applications

Western Blot (Cell lysate)



Western blot using Rreb1 polyclonal antibody (Cat # PAB10322) shows detection of a predominant band believed to be Rreb1 in various cell lysates (1 - HEK293, 2 - RFP-Rreb transfected HEK293, 3 - M460 and 4 - T1165). All lysates were loaded at 20 ug per lane and separated by SDS-PAGE. After transfer to nitrocellulose, the membrane was probed with the primary antibody diluted to 1:1,000. The membrane was washed and reacted with IRDye™800 conjugated Gt-a-Rabbit IgG [H&L] MX. IRDye™800 fluorescence image was captured using the Odyssey® Infrared Imaging System developed by LI-COR. IRDye is a trademark of LI-COR, Inc. Size estimation was made by comparison to prestained MW markers as indicated. Personal Communication, Shuling Zhang, CCR, NCI, Bethesda, MD.

Specification

Product Description	Rabbit polyclonal antibody raised against recombinant Rreb1.
Immunogen	Recombinant protein corresponding to mouse Rreb1.
Host	Rabbit
Reactivity	Mouse
Specificity	This Protein A purified antibody is directed against the mouse RREB1 protein.
Form	Liquid
Quality Control Testing	Antibody Reactive Against Recombinant Protein.

Recommend Usage	ELISA (1:2000-1:10000) Western Blot (1:500-1:2000) The optimal working dilution should be determined by the end user.
Storage Buffer	In 20 mM KH ₂ PO ₄ , 150 mM NaCl, pH 7.2 (0.01% sodium azide)
Storage Instruction	Store at 4°C. For long term storage store at -20°C. Aliquot to avoid repeated freezing and thawing.
Note	This product contains sodium azide: a POISONOUS AND HAZARDOUS SUBSTANCE which should be handled by trained staff only.

Applications

- Western Blot (Cell lysate)

Western blot using Rreb1 polyclonal antibody (Cat # PAB10322) shows detection of a predominant band believed to be Rreb1 in various cell lysates (1 - HEK293, 2 - RFP-Rreb transfected HEK293, 3 - M460 and 4 - T1165).

All lysates were loaded at 20 µg per lane and separated by SDS-PAGE.

After transfer to nitrocellulose, the membrane was probed with the primary antibody diluted to 1:1,000.

The membrane was washed and reacted with IRDye™800 conjugated Gt-a-Rabbit IgG [H&L] MX.

IRDye™800 fluorescence image was captured using the Odyssey® Infrared Imaging System developed by LI-COR.

IRDye is a trademark of LI-COR, Inc. Size estimation was made by comparison to prestained MW markers as indicated.

Personal Communication, Shuling Zhang, CCR, NCI, Bethesda, MD.

- Enzyme-linked Immunoabsorbent Assay

Gene Info — Rreb1

Entrez GeneID	68750
Protein Accession#	Q4ZE88;AAX83010
Gene Name	Rreb1
Gene Alias	1110037N09Rik, AA414966, B930013M22Rik
Gene Description	ras responsive element binding protein 1
Gene Ontology	Hyperlink
Other Designations	-

Publication Reference

- [p16 INK4a gene promoter variation and differential binding of a repressor, the ras-responsive zinc-finger transcription factor, RREB.](#)

Zhang S, Qian X, Redman C, Bliskovski V, Ramsay ES, Lowy DR, Mock BA.

Oncogene 2003 Apr; 22(15):2285.

- [Cdkn2a, the cyclin-dependent kinase inhibitor encoding p16INK4a and p19ARF, is a candidate for the plasmacytoma susceptibility locus, Pctr1.](#)

Zhang S, Ramsay ES, Mock BA.

PNAS 1998 Mar; 95(5):2429.