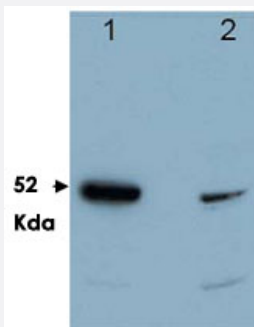


PDCD4 polyclonal antibody

Catalog # PAB10308

Size 100 ug

Applications



Western Blot

Western blot using PDCD4 polyclonal antibody (Cat # PAB10308) shows detection of a band ~52 kDa in size corresponding to PDCD4 (arrowhead).

Lane 1 contains recombinant PDCD4.

Lane 2 contains 293 HEK cells treated with TPA and MG132.

The PDCD4 polyclonal antibody was used at a 1 : 5,000 dilution.

Personal Communication. M Young & A Jansen, NCI, Bethesda, MD.



Immunohistochemistry (Formalin/PFA-fixed paraffin-embedded sections)

PDCD4 polyclonal antibody (Cat # PAB10308) was used at a 1 : 100 dilution to detect PDCD4 by immunohistochemistry on mouse colon tissue.

Tissue was fixed in 4% paraformaldehyde and paraffin embedded.

Tissue sections were deparaffinized and treated by trypsinization before staining.

Personal Communication. M Young, NCI, Bethesda, MD.

Specification

Product Description	Rabbit polyclonal antibody raised against synthetic peptide of PDCD4.
Immunogen	A synthetic peptide corresponding to C-terminus of human PDCD4.
Host	Rabbit
Reactivity	Clawed frog, Human, Mouse, Rat
Specificity	This antibody reacts with Pdc4 protein that is either phosphorylated or non-phosphorylated at Ser457.

Form	Liquid
Quality Control Testing	Antibody Reactive Against Synthetic Peptide.
Recommend Usage	ELISA (1:10000-1:50000) Western Blot (1:1000-1:10000) Immunohistochemistry (1:100-1:300) The optimal working dilution should be determined by the end user.
Storage Buffer	In 20 mM KH ₂ PO ₄ , 150 mM NaCl, pH 7.2 (0.01% sodium azide)
Storage Instruction	Store at 4°C. For long term storage store at -20°C. Aliquot to avoid repeated freezing and thawing.
Note	This product contains sodium azide: a POISONOUS AND HAZARDOUS SUBSTANCE which should be handled by trained staff only.

Applications

- Western Blot

Western blot using PDCD4 polyclonal antibody (Cat # PAB10308) shows detection of a band ~52 kDa in size corresponding to PDCD4 (arrowhead).

Lane 1 contains recombinant PDCD4.

Lane 2 contains 293 HEK cells treated with TPA and MG132.

The PDCD4 polyclonal antibody was used at a 1 : 5,000 dilution.

Personal Communication. M Young & A Jansen, NCI, Bethesda, MD.

- Immunohistochemistry (Formalin/PFA-fixed paraffin-embedded sections)

PDCD4 polyclonal antibody (Cat # PAB10308) was used at a 1 : 100 dilution to detect PDCD4 by immunohistochemistry on mouse colon tissue.

Tissue was fixed in 4% paraformaldehyde and paraffin embedded.

Tissue sections were deparaffinized and treated by trypsinization before staining.

Personal Communication. M Young, NCI, Bethesda, MD.

- Enzyme-linked Immunoabsorbent Assay

Gene Info — PDCD4

Entrez GeneID [27250](#)

Protein Accession# [NP_055271;O15501](#)

Gene Name PDCD4

Gene Alias H731, MGC33046, MGC33047

Gene Description	programmed cell death 4 (neoplastic transformation inhibitor)
Omim ID	608610
Gene Ontology	Hyperlink
Gene Summary	This gene encodes a protein localized to the nucleus in proliferating cells. Expression of this gene is modulated by cytokines in natural killer and T cells. The gene product is thought to play a role in apoptosis but the specific role has not yet been determined. Two transcripts encoding different isoforms have been identified. [provided by RefSeq]
Other Designations	OTTHUMP00000020483 nuclear antigen H731 programmed cell death 4

Publication Reference

- [Clinical significance of decreased programmed cell death 4 expression in patients with giant cell tumors of the bone.](#)

Gao F, Zhang W, Ding L, Zhao M, Ma Z, Huang S.

Oncology Letters 2018 Sep; 16(3):3805.

Application: IHC-P, Human, Giant cell tumor of the bone

- [Akt phosphorylates and regulates Pdc4 tumor suppressor protein.](#)

Palamarchuk A, Efanov A, Maximov V, Aqeilan RI, Croce CM, Pekarsky Y.

Cancer Research 2005 Dec; 65(24):11282.

- [Epidermal expression of the translation inhibitor programmed cell death 4 suppresses tumorigenesis.](#)

Jansen AP, Camalier CE, Colburn NH.

Cancer Research 2005 Jul; 65(14):6034.

Application: IHC-P, WB-Ce, WB-Tr, Mouse, Primary keratinocytes, Skin

Disease

- [Alzheimer Disease](#)
- [Genetic Predisposition to Disease](#)