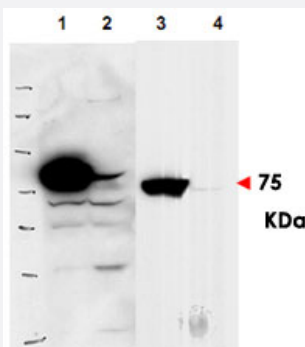


# RSL1D1 polyclonal antibody

Catalog # PAB10306      Size 100 ug

## Applications



### Western Blot (Transfected lysate)

Western blot using RSL1D1 polyclonal antibody (Cat # PAB10306) shows detection of over-expressed RSL1D1 in lysates from HeLa cells transfected with Flag-RSL1D1.

Lanes 1 and 3 contain lysate from Flag-RSL1D1 transfected HeLa cells.

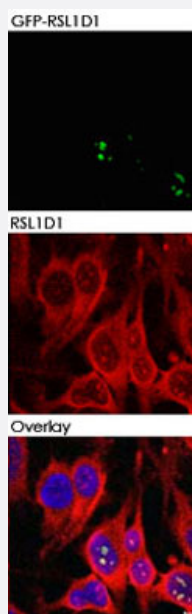
Lanes 2 and 4 contain lysate from cells transfected with null vector.

Lanes 1 and 2 were blotted with anti-Flag antibody.

Lanes 3 and 4 were probed with a 1 : 500 dilution of RSL1D1 polyclonal antibody.

The band at 75 KDa, indicated by the arrowhead, corresponds to RSL1D1.

Personal communication, J. McNally and D. Stavreva, NCI, Bethesda, MD.



### Immunofluorescence

Immunofluorescence microscopy of HeLa cells transfected with RSL1D1 polyclonal antibody (Cat # PAB10306) .

In the overlay, specific antibody staining is shown to co-localize with recombinant protein.

Cells were fixed with methanol prior to staining.

Personal communication, J. McNally and D. Stavreva, NCI, Bethesda, MD.

## Specification

### Product Description

Rabbit polyclonal antibody raised against synthetic peptide of RSL1D1.

<b>Immunogen</b>	A synthetic peptide corresponding to internal region of human RSL1D1.
<b>Host</b>	Rabbit
<b>Reactivity</b>	Human
<b>Specificity</b>	This antibody is specific to human PBK1 protein.
<b>Form</b>	Liquid
<b>Quality Control Testing</b>	Antibody Reactive Against Synthetic Peptide.
<b>Recommend Usage</b>	ELISA (1:2500-1:10000) Western Blot (1:500-1:2000) Immunoprecipitation (1:100) The optimal working dilution should be determined by the end user.
<b>Storage Buffer</b>	In 20 mM KH <sub>2</sub> PO <sub>4</sub> , 150 mM NaCl, pH 7.2 (0.01% sodium azide)
<b>Storage Instruction</b>	Store at 4°C. For long term storage store at -20°C. Aliquot to avoid repeated freezing and thawing.
<b>Note</b>	This product contains sodium azide: a POISONOUS AND HAZARDOUS SUBSTANCE which should be handled by trained staff only.

## Applications

- Western Blot (Transfected lysate)

Western blot using RSL1D1 polyclonal antibody (Cat # PAB10306) shows detection of over-expressed RSL1D1 in lysates from HeLa cells transfected with Flag-RSL1D1.

Lanes 1 and 3 contain lysate from Flag-RSL1D1 transfected HeLa cells.

Lanes 2 and 4 contain lysate from cells transfected with null vector.

Lanes 1 and 2 were blotted with anti-Flag antibody.

Lanes 3 and 4 were probed with a 1 : 500 dilution of RSL1D1 polyclonal antibody.

The band at 75 KDa, indicated by the arrowhead, corresponds to RSL1D1.

Personal communication, J. McNally and D. Stavreva, NCI, Bethesda, MD.

- Immunofluorescence

Immunofluorescence microscopy of HeLa cells transfected with RSL1D1 polyclonal antibody (Cat # PAB10306) .

In the overlay, specific antibody staining is shown to co-localize with recombinant protein.

Cells were fixed with methanol prior to staining.

Personal communication, J. McNally and D. Stavreva, NCI, Bethesda, MD.

- Immunoprecipitation

- Enzyme-linked Immunoabsorbent Assay

## Gene Info — RSL1D1

Entrez GeneID	<a href="#">26156</a>
Protein Accession#	<a href="#">O76021</a>
Gene Name	RSL1D1
Gene Alias	CSIG, DKFZP564M182, L12, MGC138433, MGC142259, PBK1
Gene Description	ribosomal L1 domain containing 1
Gene Ontology	<a href="#">Hyperlink</a>
Other Designations	cellular senescence inhibited gene protein

## Publication Reference

- [Identification of a novel nucleus protein involved in the regulation of urokinase in 95D cells.](#)  
Tong C, Tan L, Li P, Zhu YS.  
Acta Biochimica et Biophysica Sinica 2005 May; 37(5):303.
- [Suppression subtractive hybridization and expression profiling identifies a unique set of genes overexpressed in non-small-cell lung cancer.](#)  
Petroziello J, Yamane A, Westendorf L, Thompson M, McDonagh C, Cervený C, Law CL, Wahl A, Carter P.  
Oncogene 2004 Oct; 23(46):7734.
- [Identification of differentially expressed genes in human trophoblast cells by differential-display RT-PCR.](#)  
Huch G, Hohn HP, Denker HW.  
Placenta 1998 Nov; 19(8):557.

## Disease

- [Disease Progression](#)
- [Disease Susceptibility](#)
- [HIV Infections](#)