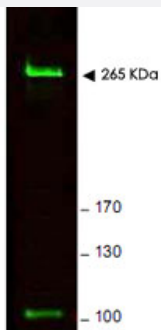


# Rif1 polyclonal antibody

Catalog # PAB10275      Size 100 ug

## Applications

### Western Blot (Cell lysate)



Western blot using Rif1 polyclonal antibody (Cat # PAB10275) shows detection of a band ~ 265 KDa corresponding to mouse Rif1 (arrowhead).

Specific reactivity with this band is blocked when the antibody is pre-incubated with the immunizing peptide (data not shown).

Approximately 25 ug of MEF whole cell lysate was separated by SDS-PAGE and transferred onto nitrocellulose.

After blocking the membrane was probed with the primary antibody diluted to 1.0 ug/mL for 2 h at room temperature followed by washes and reaction with a 1:10,000 dilution of IRDye™800 conjugated Gt-a-Rabbit IgG [H&L] MX for 45 min at room temperature IRDye™800 fluorescence image was captured using the Odyssey® Infrared Imaging System developed by LI-COR.

IRDye is a trademark of LI-COR, Inc.

## Specification

<b>Product Description</b>	Rabbit polyclonal antibody raised against synthetic peptide of Rif1.
<b>Immunogen</b>	A synthetic peptide corresponding to amino acids 2406-2419 of mouse Rif1.
<b>Host</b>	Rabbit
<b>Theoretical MW (kDa)</b>	58.1, 265.7, 267.1
<b>Reactivity</b>	Chimpanzee, Dog, Human, Mouse, Rat
<b>Specificity</b>	This affinity purified antibody is directed against mouse Rif1 protein. Databases confirm that the immunogen sequence represents the C-terminal end of mouse Rif1 (534 aa 58.1 KDa), mouse telomere-associated protein RIF1 (2418 aa 265.7 KDa) and mouse Rap1-interacting factor 1 (2426 267.1 KDa).
<b>Form</b>	Liquid

Quality Control Testing	Antibody Reactive Against Synthetic Peptide.
Recommend Usage	ELISA (1:5000-1:40000) Western Blot (1:500-1:3000) The optimal working dilution should be determined by the end user.
Storage Buffer	In 20 mM KH <sub>2</sub> PO <sub>4</sub> , 150 mM NaCl, pH 7.2 (0.01% sodium azide)
Storage Instruction	Store at 4°C. For long term storage store at -20°C. Aliquot to avoid repeated freezing and thawing.
Note	This product contains sodium azide: a POISONOUS AND HAZARDOUS SUBSTANCE which should be handled by trained staff only.

## Applications

- Western Blot (Cell lysate)

Western blot using Rif1 polyclonal antibody (Cat # PAB10275) shows detection of a band ~ 265 KDa corresponding to mouse Rif1 (arrowhead).

Specific reactivity with this band is blocked when the antibody is pre-incubated with the immunizing peptide (data not shown).

Approximately 25 ug of MEF whole cell lysate was separated by SDS-PAGE and transferred onto nitrocellulose.

After blocking the membrane was probed with the primary antibody diluted to 1.0 ug/mL for 2 h at room temperature followed by washes and reaction with a 1:10,000 dilution of IRDye™800 conjugated Gt-a-Rabbit IgG [H&L] MX for 45 min at room temperature. IRDye™800 fluorescence image was captured using the Odyssey® Infrared Imaging System developed by LI-COR. IRDye is a trademark of LI-COR, Inc.

- Enzyme-linked Immunoabsorbent Assay

## Gene Info — Rif1

Entrez GeneID	<a href="#">51869</a>
Protein Accession#	<a href="#">Q7TPD8;Q6PR54</a>
Gene Name	Rif1
Gene Alias	5730435J01Rik, 6530403D07Rik, AU016181, AW549474, D2Ert145e
Gene Description	Rap1 interacting factor 1 homolog (yeast)
Gene Ontology	<a href="#">Hyperlink</a>
Other Designations	telomere-associated protein RIF1

## Publication Reference

- [Identification and characterisation of mRif1: a mouse telomere-associated protein highly expressed in germ cells and embryo-derived pluripotent stem cells.](#)

Adams IR, McLaren A.

Developmental Dynamics 2004 Apr; 229(4):733.

Application: ChIP, IF, IHC-Fr, WB, Mouse, Mouse cell lines, Embryos