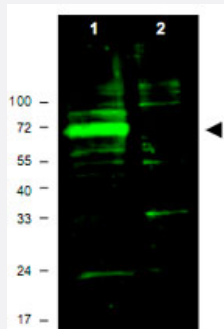


Hif3a polyclonal antibody

Catalog # PAB10271 Size 100 ug

Applications

Western Blot (Cell lysate)



Western blot using Hif3a polyclonal antibody (Cat # PAB10271) shows detection of a band ~72 kDa corresponding to mouse Hif3a (arrowhead). Approximately 10 ug of a CoCl₂ treated NIH/3T3 cell lysate (Lane 1) and control NIH/3T3 cell lysate (Lane 2) were separated by 4-20% SDS-PAGE and transferred onto nitrocellulose.

Treatment of exponentially growing NIH/3T3 cells with 130 uM CoCl₂ for 6 h at 37°C effectively mimics hypoxia.

After blocking the membrane was probed overnight at 4°C with the primary antibody diluted to 1:1,600.

The membrane was washed and reacted with a 1:10,000 dilution of IRDye™800 conjugated Gt-a-Rabbit IgG [H&L] MX for 45 min at room temperature.

IRDye™800 fluorescence image was captured using the Odyssey® Infrared Imaging System developed by LI-COR.

IRDye is a trademark of LI-COR, Inc.

Specification

Product Description	Rabbit polyclonal antibody raised against synthetic peptide of Hif3a.
Immunogen	A synthetic peptide corresponding to amino acids 581-592 of mouse Hif3a.
Host	Rabbit
Reactivity	Mouse, Rat
Specificity	This affinity-purified antibody is directed against mouse Hif3alpha protein. No reactivity is expected against other forms of Hif proteins.
Form	Liquid

Quality Control Testing	Antibody Reactive Against Synthetic Peptide.
Recommend Usage	ELISA (1:14000-1:80000) Western Blot (1:10500-1:8000) The optimal working dilution should be determined by the end user.
Storage Buffer	In 20 mM KH ₂ PO ₄ , 150 mM NaCl, pH 7.2 (0.01% sodium azide)
Storage Instruction	Store at 4°C. For long term storage store at -20°C. Aliquot to avoid repeated freezing and thawing.
Note	This product contains sodium azide: a POISONOUS AND HAZARDOUS SUBSTANCE which should be handled by trained staff only.

Applications

- Western Blot (Cell lysate)

Western blot using Hif3a polyclonal antibody (Cat # PAB10271) shows detection of a band ~72 KDa corresponding to mouse Hif3a (arrowhead).

Approximately 10 ug of a CoCl₂ treated NIH/3T3 cell lysate (Lane 1) and control NIH/3T3 cell lysate (Lane 2) were separated by 4-20% SDS-PAGE and transferred onto nitrocellulose.

Treatment of exponentially growing NIH/3T3 cells with 130 uM CoCl₂ for 6 h at 37°C effectively mimics hypoxia.

After blocking the membrane was probed overnight at 4°C with the primary antibody diluted to 1:1,600.

The membrane was washed and reacted with a 1:10,000 dilution of IRDye™800 conjugated Gt-a-Rabbit IgG [H&L] MX for 45 min at room temperature.

IRDye™800 fluorescence image was captured using the Odyssey® Infrared Imaging System developed by LI-COR.

IRDye is a trademark of LI-COR, Inc.

- Enzyme-linked Immunoabsorbent Assay

Gene Info — Hif3a

Entrez GeneID	53417
Protein Accession#	Q9Z2I5:NP_058564
Gene Name	Hif3a
Gene Alias	lpas, MOP7
Gene Description	hypoxia inducible factor 3, alpha subunit
Gene Ontology	Hyperlink
Gene Summary	O

Other Designations

OTTMUSP00000026202|hypoxia inducible factor three alpha|inhibitory PAS domain protein

Publication Reference

- [Structural basis for PAS domain heterodimerization in the basic helix--loop--helix-PAS transcription factor hypoxia-inducible factor.](#)
Erbel PJ, Card PB, Karakuzu O, Bruick RK, Gardner KH.
PNAS 2003 Dec; 100(26):15504.
- [Inhibitory PAS domain protein \(IPAS\) is a hypoxia-inducible splicing variant of the hypoxia-inducible factor-3alpha locus.](#)
Makino Y, Kanopka A, Wilson WJ, Tanaka H, Poellinger L.
The Journal of Biological Chemistry 2002 Sep; 277(36):32405.
- [Cross-talk between the aryl hydrocarbon receptor and hypoxia inducible factor signaling pathways. Demonstration of competition and compensation.](#)
Chan WK, Yao G, Gu YZ, Bradfield CA.
The Journal of Biological Chemistry 1999 Apr; 274(17):12115.