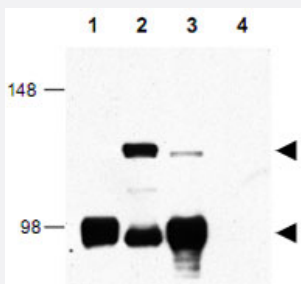


# CRTC1 polyclonal antibody

Catalog # PAB10265      Size 100 ug

## Applications

### Western Blot



Western blot using CRTC1 polyclonal antibody (Cat # PAB10265) shows detection of CRTC1 (lower arrowhead) and CRTC1 : MAML2 fusion protein (top arrowhead) in cell lysates.

Lane 1 contains lysate from cells expressing CRTC1 only.

Lane 2 contains lysate from cells transfected with fusion protein.

Lane 3 contains lysate from cells strongly expressing CRTC1 and weakly expressing the fusion protein.

Lane 4 contains lysate from control cells. After SDS-PAGE and transfer, the membrane was probed with the primary antibody diluted to 1:1,000.

Personal Communication, Frederick Kaye, CCR-NCI, Bethesda, MD.

## Specification

<b>Product Description</b>	Rabbit polyclonal antibody raised against synthetic peptide of CRTC1.
<b>Immunogen</b>	A synthetic peptide corresponding to amino acids 19-34 of human CRTC1.
<b>Host</b>	Rabbit
<b>Reactivity</b>	Bovine, Human, Mouse, Pufferfishes, Rat
<b>Specificity</b>	This affinity-purified antibody is directed against human MECT1 protein.
<b>Form</b>	Liquid
<b>Quality Control Testing</b>	Antibody Reactive Against Synthetic Peptide.
<b>Recommend Usage</b>	ELISA (1:10000-1:40000) Western Blot (1:500-1:20000) The optimal working dilution should be determined by the end user.

Storage Buffer	In 20 mM KH <sub>2</sub> PO <sub>4</sub> , 150 mM NaCl, pH 7.2 (0.01% sodium azide)
Storage Instruction	Store at 4°C. For long term storage store at -20°C. Aliquot to avoid repeated freezing and thawing.
Note	This product contains sodium azide: a POISONOUS AND HAZARDOUS SUBSTANCE which should be handled by trained staff only.

## Applications

- Western Blot

Western blot using CRTC1 polyclonal antibody (Cat # PAB10265) shows detection of CRTC1 (lower arrowhead) and CRTC1 : MAML2 fusion protein (top arrowhead) in cell lysates.

Lane 1 contains lysate from cells expressing CRTC1 only.

Lane 2 contains lysate from cells transfected with fusion protein.

Lane 3 contains lysate from cells strongly expressing CRTC1 and weakly expressing the fusion protein.

Lane 4 contains lysate from control cells. After SDS-PAGE and transfer, the membrane was probed with the primary antibody diluted to 1:1,000.

Personal Communication, Frederick Kaye, CCR-NCI, Bethesda, MD.

- Enzyme-linked Immunoabsorbent Assay

## Gene Info — CRTC1

Entrez GeneID	<a href="#">23373</a>
Protein Accession#	<a href="#">NP_056136(isoform1);Q6UUV9</a>
Gene Name	CRTC1
Gene Alias	FLJ14027, KIAA0616, MECT1, TORC1, WAMTP1
Gene Description	CREB regulated transcription coactivator 1
Omim ID	<a href="#">607536</a>
Gene Ontology	<a href="#">Hyperlink</a>
Other Designations	mucoepidermoid carcinoma translocated 1 transducer of regulated cAMP response element-binding protein (CREB) 1

## Publication Reference

- [Mect1-Maml2 fusion oncogene linked to the aberrant activation of cyclic AMP/CREB regulated genes.](#)

Coxon A, Rozenblum E, Park YS, Joshi N, Tsurutani J, Dennis PA, Kirsch IR, Kaye FJ.

Cancer Research 2005 Aug; 65(16):7137.

- [TORCs: transducers of regulated CREB activity.](#)

Conkright MD, Canettieri G, Screamon R, Guzman E, Miraglia L, Hogenesch JB, Montminy M.

Molecular Cell 2003 Aug; 12(2):413.

Application: IP, Human, HEK 293T cells

- [t\(11;19\)\(q21;p13\) translocation in mucoepidermoid carcinoma creates a novel fusion product that disrupts a Notch signaling pathway.](#)

Tonon G, Modi S, Wu L, Kubo A, Coxon AB, Komiya T, O'Neil K, Stover K, El-Naggar A, Griffin JD, Kirsch IR, Kaye FJ.

Nature Genetics 2003 Feb; 33(2):208.

## Disease

- [Cardiovascular Diseases](#)
- [Diabetes Mellitus](#)
- [Edema](#)
- [Genetic Predisposition to Disease](#)
- [Obesity](#)